

Multi-language Display of System Screens (V6.0.18.0 and later)

Issue No. 100 (September 2017)

The multi-language display function is now enhanced.

Interface languages for the system menu and Local mode can be set as desired for multi-language screen programs.

Before

When a multi-language screen program is specified the same display font for all languages, interface languages can be changed over in RUN mode but the system screens are displayed only in the language supported by the specified display font.

Display font setting: Japanese/Chinese
Interface language: Chinese



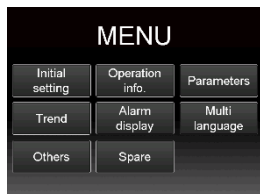
When a communication error occurs

Time-out screen is displayed in Chinese.



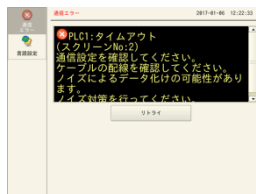
A font that supports the interface language is specified.

Display font setting: Japanese/Japanese
Interface language: English



When a communication error occurs

Time-out screen is displayed in Japanese.



Until now, the system screen language could not be changed over when using the same font for different languages.



After

Now that multi-language display of system screens is possible, system screens can be displayed in the currently selected interface language!

Display font setting: Japanese/Japanese
Interface language: Japanese

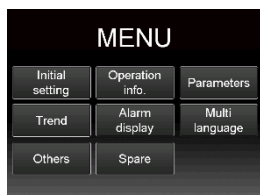


When a communication error occurs

Time-out screen is displayed in Japanese.

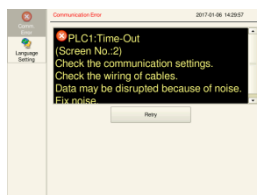


Interface language: English



When a communication error occurs

Time-out screen is displayed in English.



The system screen language can be changed aside from the font settings for RUN mode.



Good
Now I can understand what's being displayed when trouble occurs!
Consideration for operators who speak different languages is great.

The setting procedure is described on the back page.



Settings

Procedure

<Required settings>

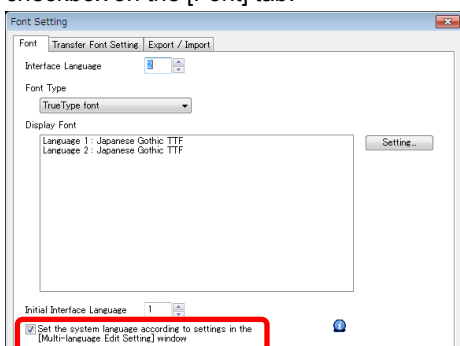
- (1) Font setting: Enable multi-language display of system screens and select the fonts to transfer.
- (2) Multi-language edit setting: Specify the system screen language for each interface language.

<Settings>

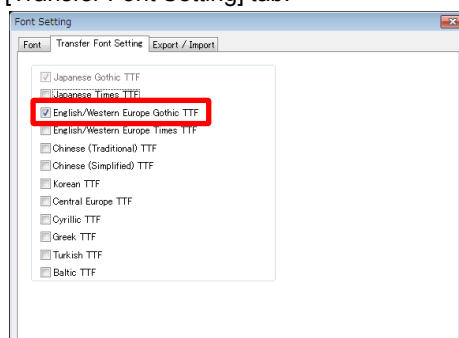
(1) Font setting

Configure the following settings on the [Font Setting] window displayed by clicking [System Setting] → [Multi-language Setting].

- 1) Select the [Set the system language according to settings in the [Multi-language Edit Setting] window] checkbox on the [Font] tab.

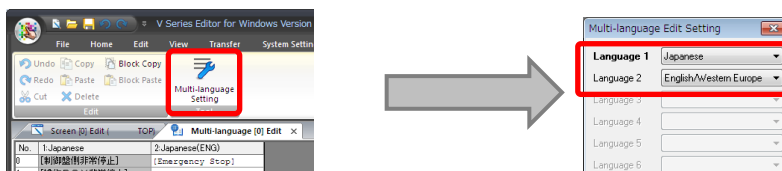


- 2) Select a font corresponding to the language you wish to use to display system screens on the [Transfer Font Setting] tab.



(2) Multi-language edit setting

Specify the languages to use as system languages on the [Multi-language Edit Setting] window displayed by clicking [Home] → [Registration Item] → [Multi-language] → [Multi-language Setting].

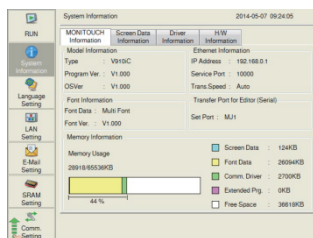


Point

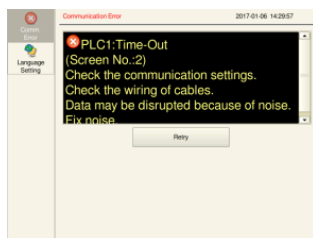
Japanese, English, Chinese (Simplified), Chinese (Traditional), and Korean can be used as system languages.

Applicable Areas

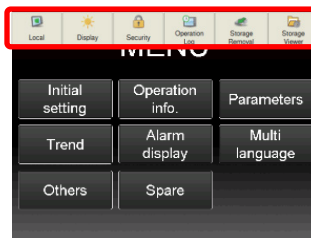
Local mode



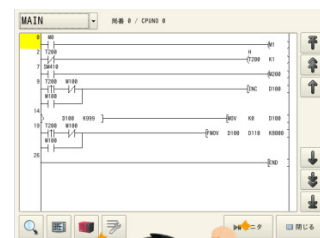
Error screen



System menu
(including each menu screen)



Ladder monitor screen



Improve operability using the enhanced multi-language display function!



Hakko Electronics Co., Ltd.

Overseas Sales Dept.

TEL: +81-76-274-2144 FAX: +81-76-274-5136

<http://monitouch.fujielectric.com/>