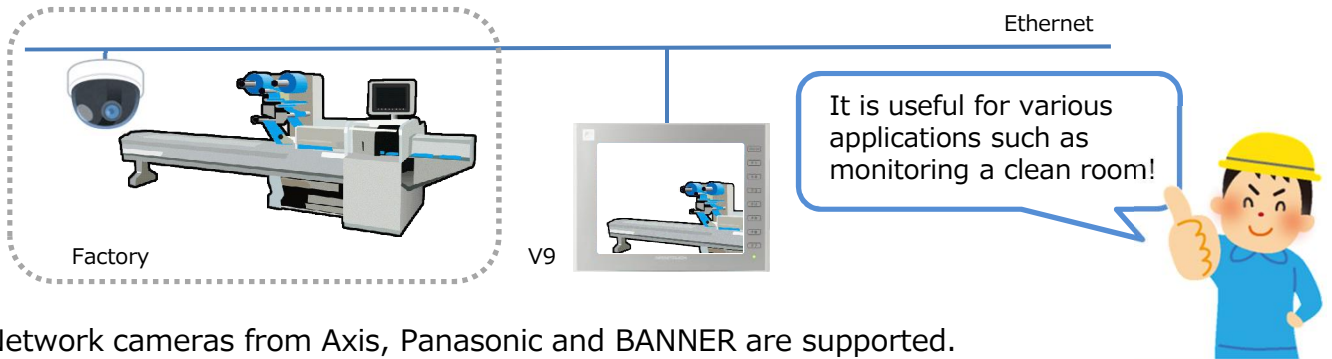


# [Network Camera Display – Update Information]

## Displaying network camera image on the V9 to grasp current status of the factory floor in real time!

### What is network camera display function?

You can connect network cameras to V9 via Ethernet to display captured images on it.



Network cameras from Axis, Panasonic and BANNER are supported.

Manufacturer		Type	Protocol
Axis	•All models	MOTION-JPEG (motion picture)	HTTP protocol communication (TCP/IP)
Panasonic	•BB series •BL series		
BANNER	•PresencePLUS P4 OMNI	Bitmap (still image)	Dedicated protocol

### Panasonic BB series: verified models

Which BB series should I select to connect it to V9 without fail?

**Are you still thinking which camera you are going to use?  
Try these verified models!**

It is reliable because they are all verified at Hakko!

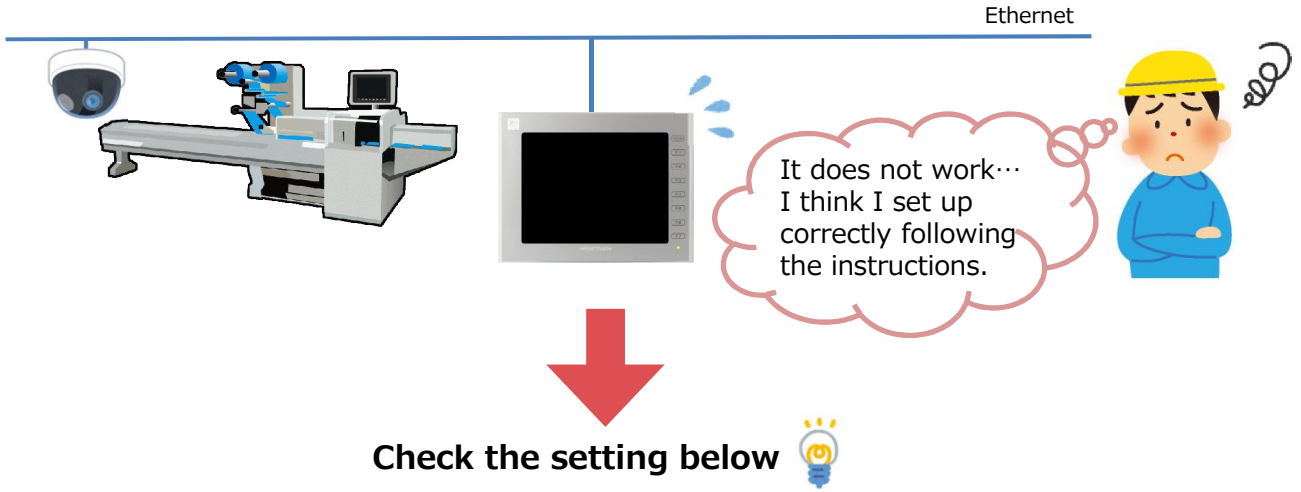
**Panasonic BB-HCM580  
BL-C111**

---

**BB-SW172A  
BB-ST165A  
BB-SP104W** } Newly verified\*

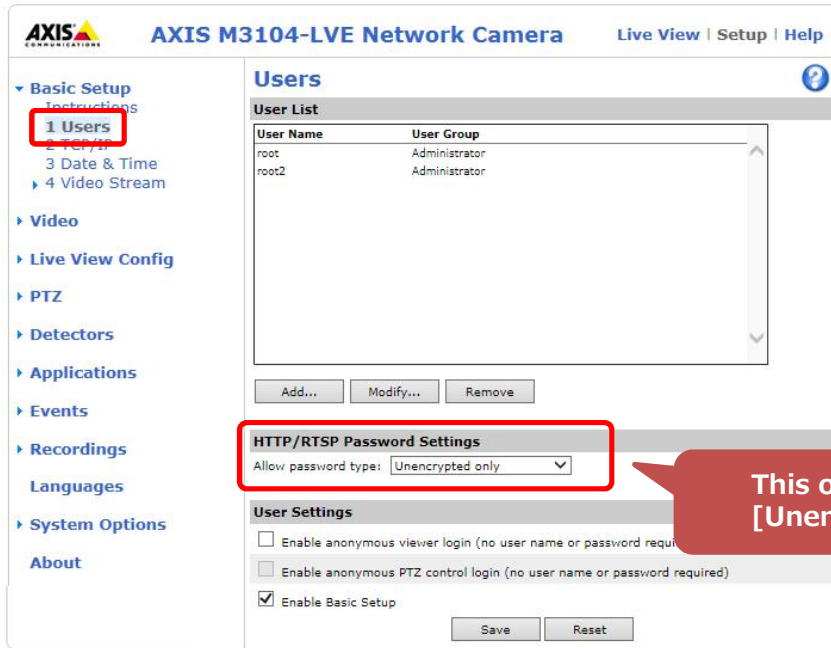
\*To be included in the next upgrade.

**Caution: When connecting Axis network camera**



**Some Axis network cameras have the following [HTTP/RTSP Password Settings] option.**

e.g.) Setting for M3104-LVE



**AXIS M3104-LVE Network Camera** Live View | Setup | Help

- Basic Setup
  - Instructions
  - 1 Users**
  - 2 Factory
  - 3 Date & Time
  - 4 Video Stream
- Video
- Live View Config
- PTZ
- Detectors
- Applications
- Events
- Recordings
- Languages
- System Options
- About

User Name	User Group
root	Administrator
root2	Administrator

HTTP/RTSP Password Settings  
Allow password type: Unencrypted only

User Settings

- Enable anonymous viewer login (no user name or password required)
- Enable anonymous PTZ control login (no user name or password required)
- Enable Basic Setup

Save Reset

This option must be [Unencrypted only].



**All the V9 series support network camera  
because they all have on-board LAN port!  
Please take this opportunity to try this feature!**

**Hakko Electronics Co., Ltd.**

Overseas Sales Dept.

TEL: +81-76-274-2144 FAX: +81-76-274-5136

<http://monitouch.fujielectric.com/>