

V-SFT Update Information

V-SFT-5 (Ver. 5.4.17.0)

- Thanks to the customize feature of panel meter, it is possible to design the panel meter in detail so that it matches the mage of your familiar meter.
- Simultaneous operation of two screens is available by using a global overlap that can be shown constantly.
- It is possible to change the contents of the message/comment simply by editing the text file with the screen program unopened.

Customizable Panel Meter

Additional features

[Before]

Detailed parts cannot be changed due to the restrictions.



[Now: Customizable]

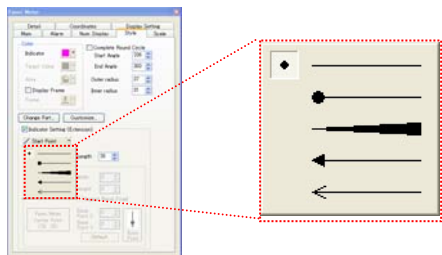
Flexible customize feature makes it possible to create a panel meter more freely.



Function Enhancement

1 Indicator Style Editing

-Possible to change shape/length of indicator
It is possible to select the shape of the indicator that you wish to use from the list.
The length of the indicator can also be specified in a unit of dot.



-Select bitmap image as indicator
It is possible to select an original image created by yourself and use it as an indicator of the panel meter.



Applicable models

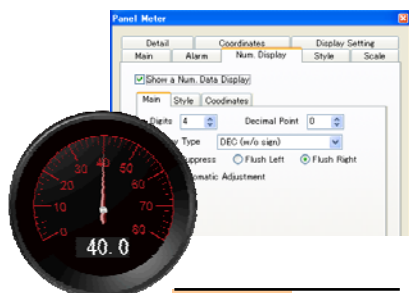
V815X, V812iS, V812S
V810iS, V810S, V810iT
V810T, V808iS, V808S

*Supported with 32K colors or more.

Function Enhancement

2 Num. Display Placement

Num. Display is added to the panel meter setting. It enables you to create a panel-meter with the combination of analog and digital display.



Applicable models

V8 series

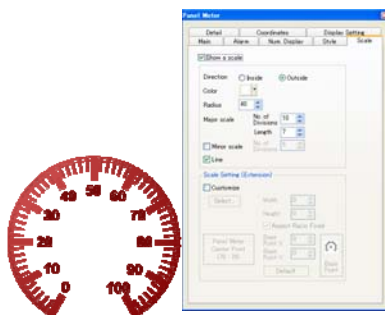
*Supported with 32K colors or more.

*Not supported with V806 series with portrait orientation.

Function Enhancement

3 Scale Setting Added

Scale setting is added to the panel meter setting. It is possible to select an original image as a scale.



Applicable models

V8 series

*Supported with 32K colors or more.

*Not supported with V806 series with portrait orientation.

Function Enhancement

4 Alarm2 Supported

It is possible to set an alarm color to each alarm range.



Applicable models

V8 series

*Supported with 32K colors or more.

*Not supported with V806 series with portrait orientation.

Global Overlap

Additional features

It is possible to display the same overlap even switching the screens.

Before switchover **During switchover (image)** **After switchover**

The global overlap does not disappear even during the screen switchover.

Convenient for the cases such as...

- Certain information needs to be shown constantly.
- Screens need to be separated as usage (e.g.) one for operating and one for monitoring

Message / Comment Transfer Feature

Additional features

It is possible to change only the contents of the message/comment using a text file without modifying the screen program itself.

Transfer

A.V8 (Screen program)
+
MSG0000.txt (Message)

Transfer the screen program and the text file at once.

Modification NOT necessary

For company A: 1st line: Emergency Stop, 1st line: Sensor Abnormal, 1st line: Suspended

For company B: A Pro. line: Emergency Stop, A Pro. line: Pressure Sensor Abnor., A Pro. line: Suspended

Easy to manage screen programs!

It is possible to change only messages depending on the needs of each customer without modifying the screen program that manages master data.

Good

Free version upgrade of the configuration software V-SFT-5



The configuration software (upgraded version) can be downloaded from the following website.
(Membership registration is required.)

Website:

<http://www.hakko-elec.co.jp/en/download/09vsft5/index.php#02>