

Upgrading Maintenance Capacity and Configuration Function

The functions that support for your screen configuration improve your working efficiency, and the maintenance capability in a factory is enhanced by setting and registering various kinds of information in a user-friendly way.

Adding Title-line to Sampling CSV File

Enhanced maintenance capability

Storing CSV files for title in a CF card enables to add an arbitrary title as a header when saving sampling data as a CSV file.

Compatible Model **V8/V7**

[without header file]

[with header file]

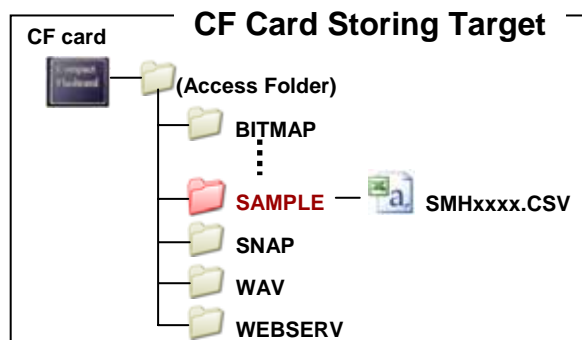
The data is saved, but it's still hard to understand.

Sampled data have their own titles. That's so easy to recognize them!

Setting Method

Create the following title file [SMHxxxx.CSV](xxxx=Buffer No.), and store it in a [SAMPLE] folder of a CF card.

[The Image of Header File]



Note) There is no limit on the number of lines and columns of CSV file [SMHxxxx.CSV] for title, however, the maximum size of the file is 239 Kbytes.

Adding Comment Setup in Macro Block

Enhanced configuration function

You can setup and register comments freely in macro block, which runs your own programs by using unique command of MONITOUCH.

Compatible Model **V-SFT-5**

You can register arbitrary comments up to 16 one-byte alphanumeric characters.

When calling up a macro block by using CALL command, you can select it from macro block comments.

Useful

Page Block Batch Setting

Efficiency increased!

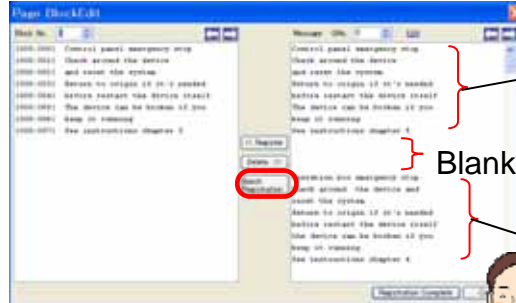
Enhanced configuration function

Batch registration function is added to Page Block registering work, which displays multiline messages, and that allows the auto-registration per unit of message lines and the auto-divisional-registration by detecting blank lines.

Compatible Model **V-SFT-5**



Page Block can be used as one of the ways to display the multiline messages.



Blank lines

It detects blank lines to divide and register multiple lines automatically. That increases your working efficiency.

Page Block0

Control panel emergency stop
Check around the device and reset the system
Return to origin if it's needed before restart the device itself
The device can be broken if you keep it running
See instructions chapter 5

Page Block1

Operation box emergency stop
Check around the device and reset the system
Return to origin if it's needed before restart the device itself
The device can be broken if you keep it running
See instructions chapter 5

Network Table Batch Setting

Efficiency increased!

Enhanced configuration function

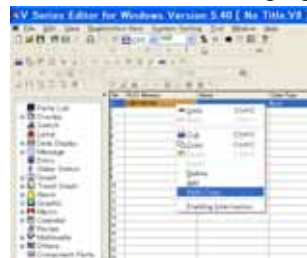
8-way communication enables connection among V8 and up to 8 different kinds of FA devices. It became much easier to register network table useful for exchanging data among connected devices.

Compatible Model **V-SFT-5**



Communicate between devices via V8

D100	20	W100	20
D101	80	W101	80
D102	45	W102	45
D103	60	W103	60
D104	18	W104	18
D105	35	W105	35



Multi copy function enables to batch setting to exchange consecutive data, and that enhances your working efficiency.

Free version upgrade of the configuration software V-SFT-5



The configuration software (updated version) can be downloaded from the following website.

Website:

<http://www.hakko-elec.co.jp/en/download/09vsft5/index.html#02>