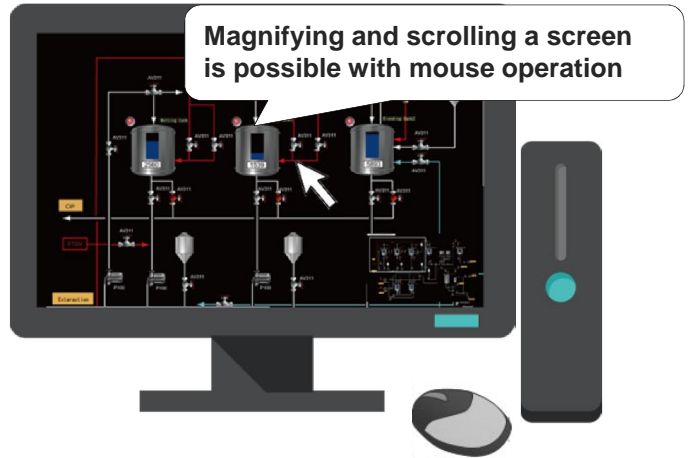
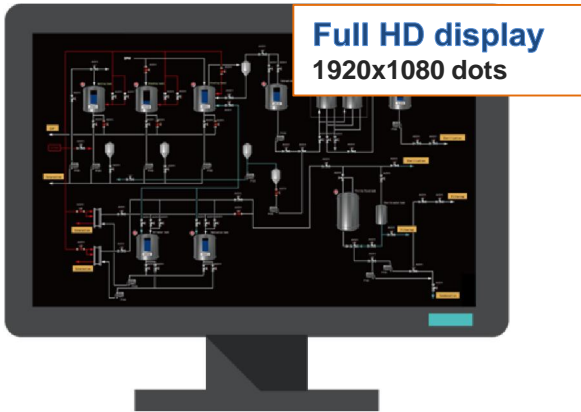


TELLUS and V-Server Ver. 4 - V9 supported!

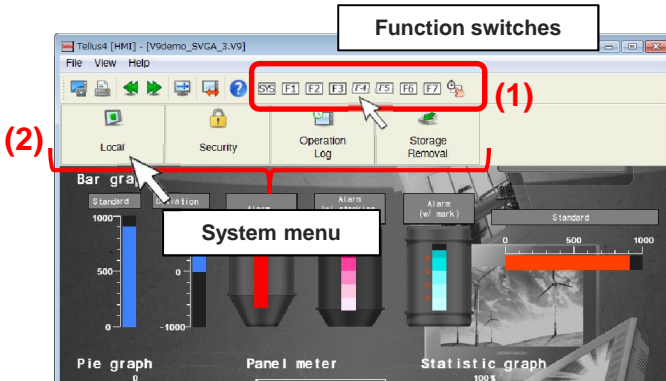
- V9 functionalities are achievable (TELLUS-HMI)
- Data collection through V9 connecting to PC via Ethernet (V-Server)

TELLUS-HMI

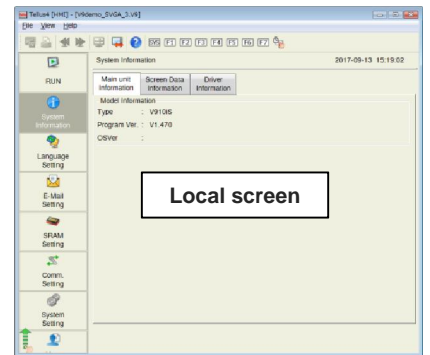
Large and high resolution full HD display is possible.



You can operate local screen, system menu, and function switches.



Click [SYS] and then [Local]...



You can display the local screen.

Connectable devices are largely increased.

Connectable devices are equivalent to V9.

PLCs/temperature controllers/inverters that were not compatible with TELLUS Ver. 3 or earlier are now available.

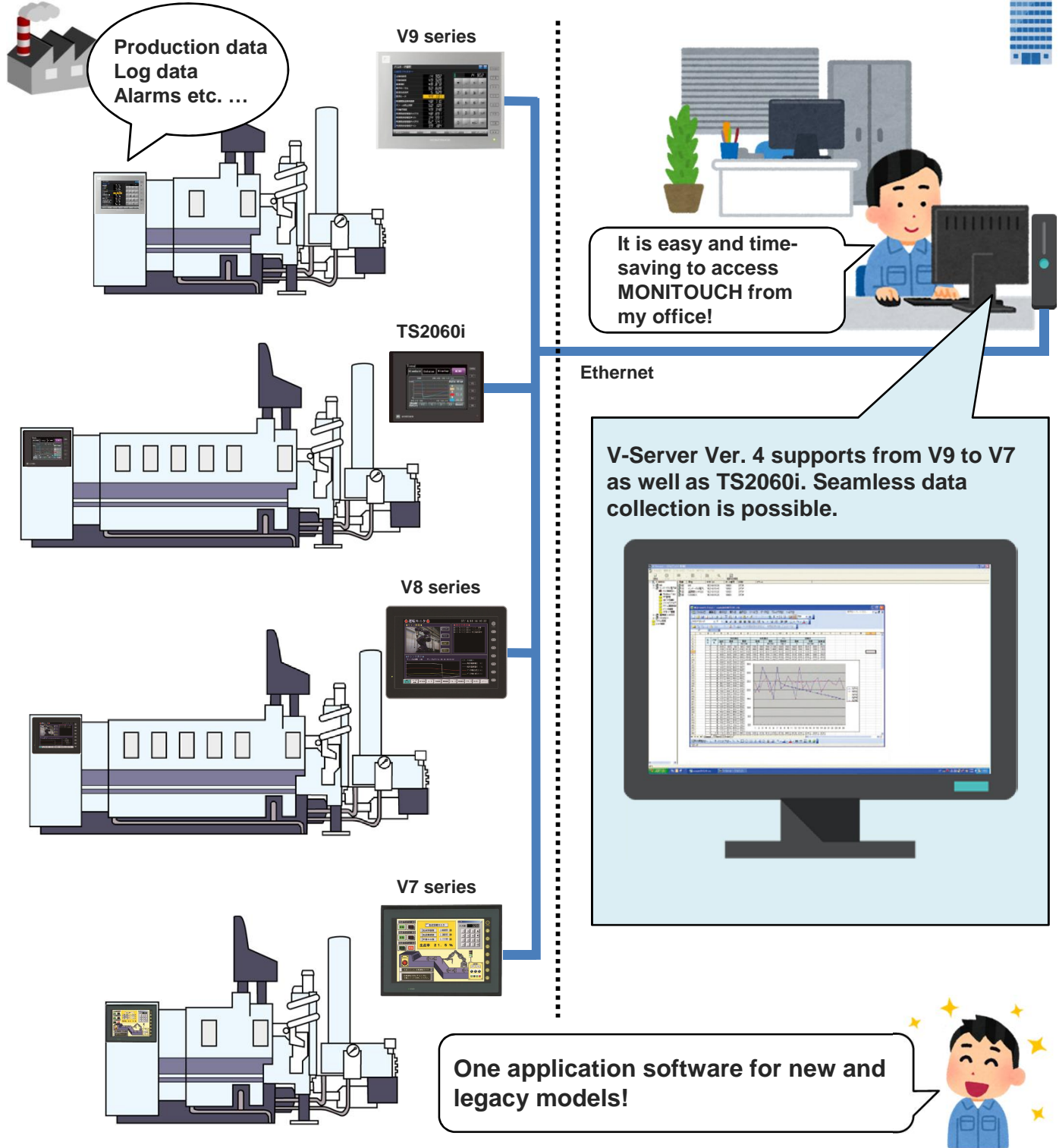
*Devices that requires CUR-xx is not available. (OPCN1/CC-Link/T-link/Profibus-DP/SX bus/DeviceNet/FL-net/EtherCAT)

TELLUS Ver.4 also supports Ver. 3/Ver. 2 capabilities.

Version (file name)	Supported screen program
TELLUS Ver. 4 (Tellus4.exe)	V9 series (*.V9 file)
TELLUS Ver. 3 (Tellus3.exe)	V8 series/TS2060 (*.V8 file)
TELLUS Ver. 2 (Tellus.exe)	V7 series/V6 series (*.V7/*.V6 file)

V-Server

Information at the factory floor can be acquired through Ethernet if your factory floor has MONITOUCH there.



Hakko Electronics Co., Ltd.

Overseas Sales Dept.

TEL: +81-76-274-2144 FAX: +81-76-274-5136

<http://monitouch.fujielectric.com/>