

## [Suggestion for reducing man-hours]

Work faster with pre-defined component parts to create setting screens such as clock, backlight etc.



What is a component part?

A component part is a single part including necessary items and macro commands to work and usable by simply placing it on a screen and make some simple settings in V-SFT-6.

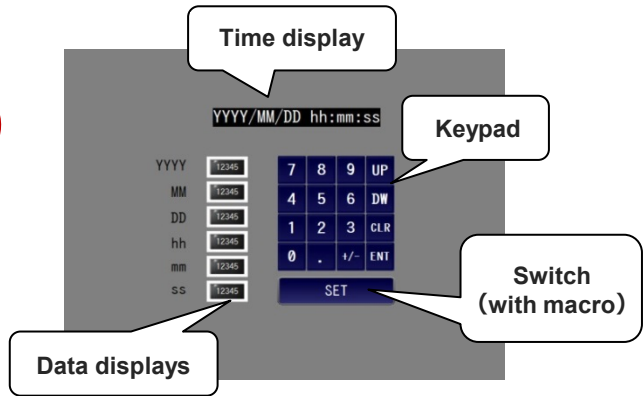
### Example: Clock setting screen

Before

I needed to create a screen by placing data displays, switches, and create macro commands to achieve clock setting functionality.



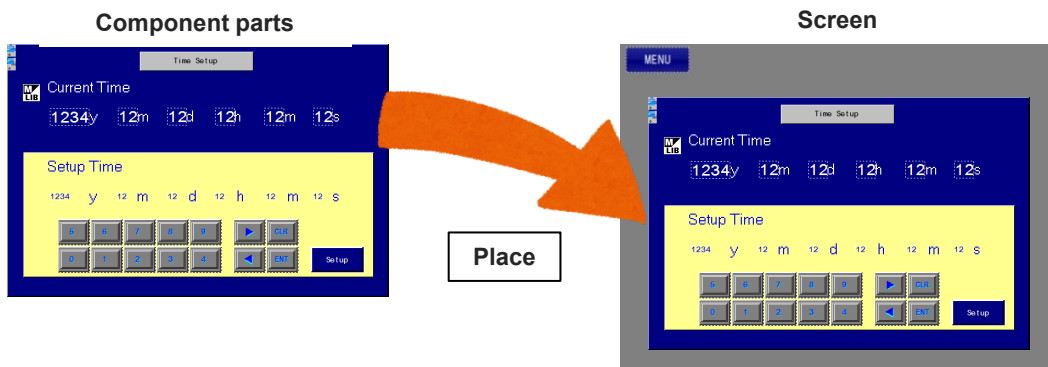
I do not know what functions I should use because I am not familiar with V-SFT... Macro commands seem to be difficult...



Try component parts!

After

All it takes is to place the component part for clock setting included in V-SFT!



It is very easy because I need to place a single component part on the screen!



## Type of parts

Useful component parts include I/O monitor, interface parts for temperature controllers/ inverters, and more!

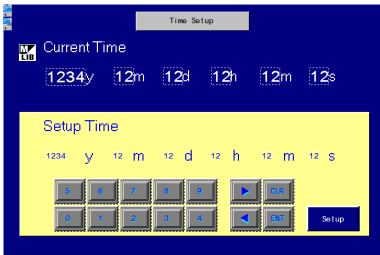
Type	File Name	Web Site	V-SFT-6
Inverter	Fuji	✓	✓
	MITSUBISHI		✓
IO Monitor	Fuji		✓
	KEYENCE		✓
	MITSUBISHI		✓
	OMRON		✓
	Panasonic		✓
	YOKOGAWA		✓
PLC Monitor	Siemens		✓
Robot Controller	IAI		✓
Temperature Controller	FUJI	✓	✓
	RKC		✓
	YOKOGAWA	✓	

\*Website: Available from our website.  
 V-SFT-6: Bundled with the V-SFT-6.

Type	File Name	Web Site	V-SFT-6
Alarm	Alarm Display		✓
	Alarm Logging		✓
	Bit Order Alarming		✓
	Bit Order Alarming and Alarm Sub Display		✓
	Time Order Alarming		✓
	Time Order Alarming with Acknowledge		✓
	Time Order Alarming with Alarm Sub Display		✓
Recipe	Recipe		✓
Time Setup	Time Setup		✓
	Time Setup 2		✓
Others	Backlight_Automatic Turn Off_Time Setup		✓
	Character Input		✓
	Maintenance information		✓
	Password		✓

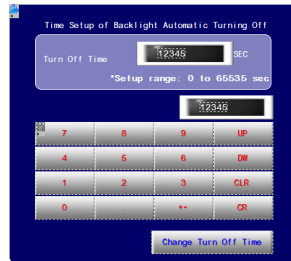
### Clock setting part

- Adjusts current time.



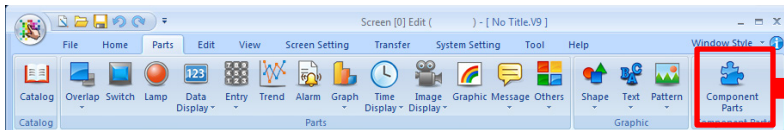
### Backlight auto-turn off time setup part

- Changes the time to turn off the backlight.



## Configuration method

Go to [Parts] > [Component Parts].



Select a part and place it on a screen.

