

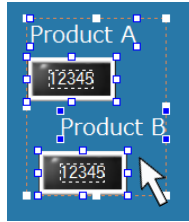
[Suggestion for reducing man-hours] Guides features for efficient screen layouts

Before

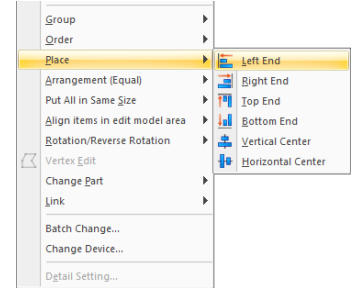
To align parts and texts on a screen, I used the right-click menu to select the Place command...

Many mouse actions...

Can I align them in a simple way?



Select items > Right-click, then...



Click Place > click Left End...

Try Guides features for easy alignment!

After

The guides lead an object to snap it to other parts or items on a screen.

This is the guide!



Align to the left...



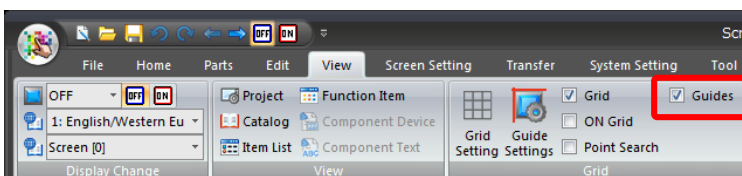
Align to the center horizontally...



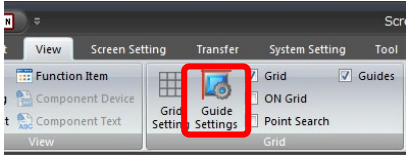
Objects are aligned by simply moving one of them!

To show the guides:

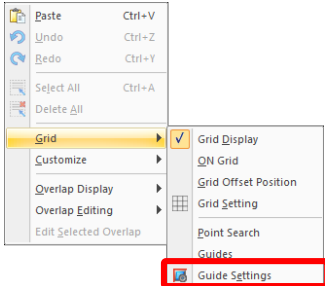
Use the version 6.0.30.0 or later. Check [Guides] in View.



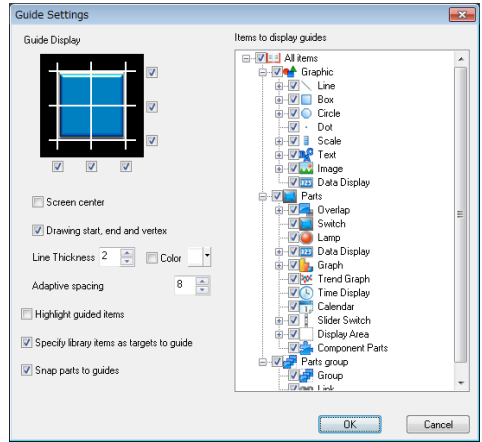
Enhanced guides features are available with the version 6.0.32.0 or later.



Click [View] > [Guide Settings] or



Right-click > [Grid] > [Guide Settings]



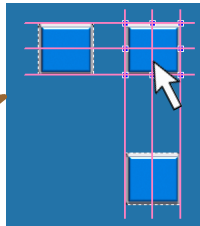
I can display the guides in my favorite way because I can finely tune up my guides!

Great features

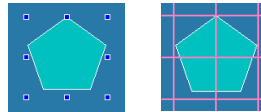
1. Configurable line thickness/color



Adjust the line with easy-to-see color and thickness.

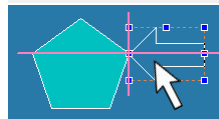


2. Guides on start, end, and vertex



The guides appear only on the handles.

Drawing start, end and vertex



The guides can be displayed on each vertex.

3. Items on a library are also OK



Specify library items as targets to guide

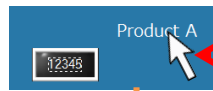


Alignment is also available for the items on the library!



4. Snapping to guides

Snap parts to guides



Move a text with a mouse



The text snaps to the guide!

Work faster with the Guides!
Reduce your screen development time!