

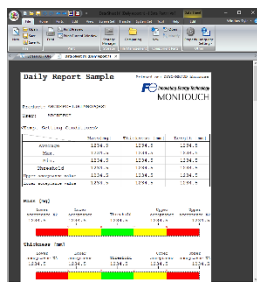
[Suggestion for operational improvement] V9 Series Functions Relevant to 21 CFR Part 11

It has become more and more difficult to ensure the reliability of electronic records because they can be easily modified without leaving a trace of change. In order to ensure the reliability of electronic records and signatures, a regulation called "21 CFR Part 11" was established. The following is an introduction to the V9 functions relevant to 21 CFR Part 11.

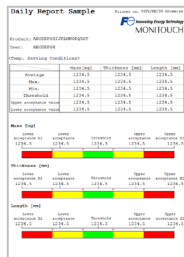
Electronic Signature Function

PDF File Output Function (Extended Data Sheet Function)

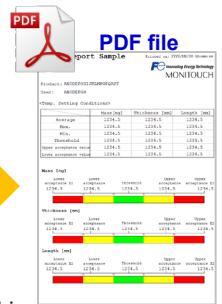
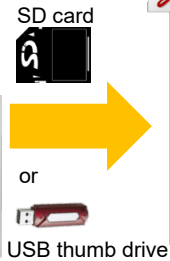
- You can save the pre-created format as a PDF file to an SD card.
- The print format can be used to display PLC values, graphs and images.
- PDF file output is page insertable, so you can save it as a single file. (First in industry) (*1)



Creating a data sheet format (using screen configuration software)

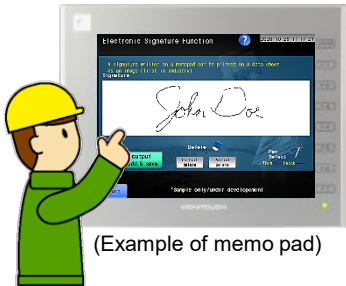


Data sheet printing

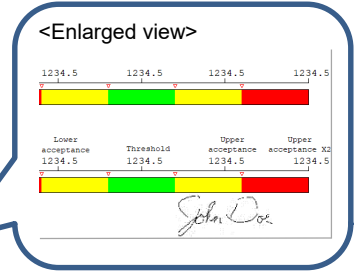
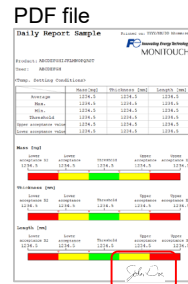
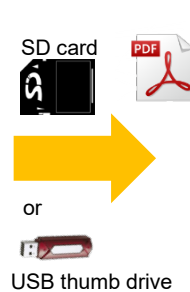


Electronic Signature Function (Signed on a PDF file) (Coming Soon)

- To save a signed PDF file, sign it by hand on the screen of the V9 and then output it as a PDF file. This ensures that the data is stored in the same way as when it is stored in a paper form with the handwritten signature of the individual.



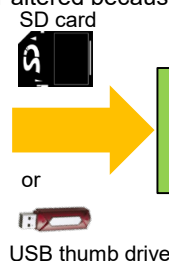
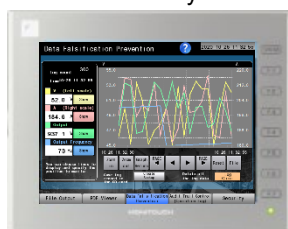
(Example of memo pad)



*1: According to our own research.

Prevention of Data Falsification

- Logging data (temperature, pressure, etc.) and alarm history stored V9 can be saved in the BIN file format (*2) in a storage device.
- The contents of the data cannot be easily viewed or altered because the data is in the BIN file format.



*2: To convert the BIN file to a CSV file, a dedicated tool is required.

Security Function

Password Management

- You can easily register/change/delete user IDs or passwords on the V9 without preparing a computer if you log in to the V9 as an "Administrator".



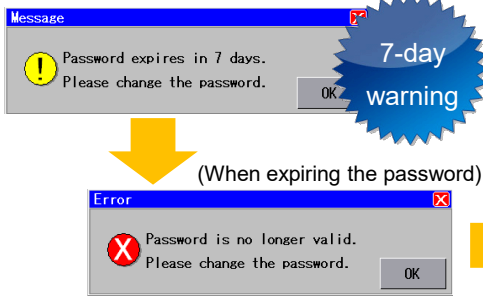
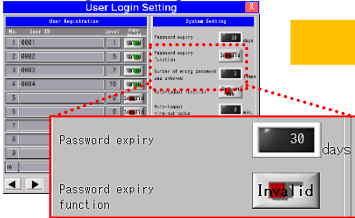
To
User Registration screen



Up to
50
entries

- You can manage the expiration date of the passwords.
 - Once the password expires, the user will not be able to login until the user changes his/her password.

User Login Setting screen

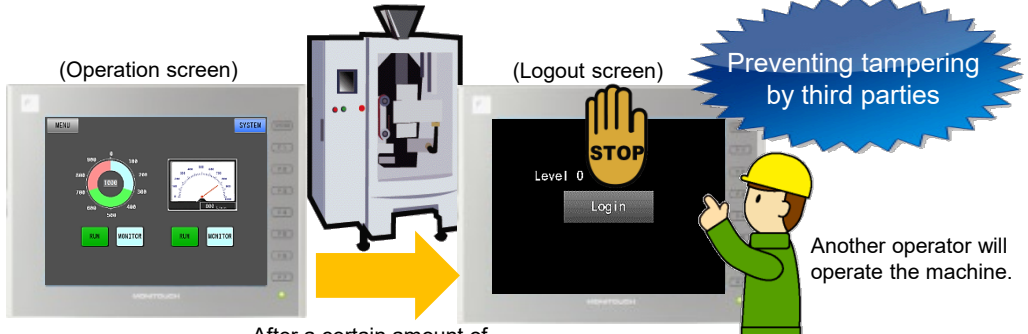
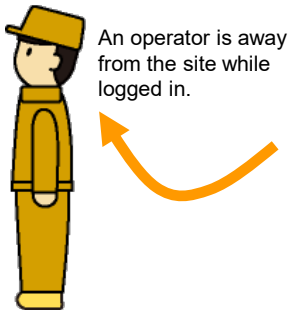


User Login Change screen



Auto Logout Function / Unauthorized Login Prevention

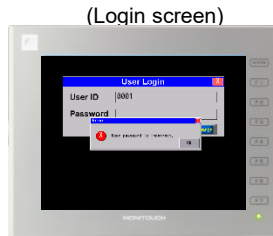
- Auto Logout Function
You can set the system to automatically log out when there is no screen activity within a set time.



After a certain amount of time has passed... **Auto Logout**

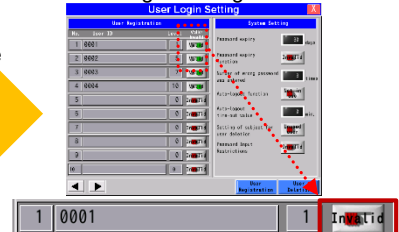
- Prevention of Unauthorized Login
 - In case of successive password mistakes, the registered user's settings will be disabled and the user will not be able to login.
 - The administrator can re-enable the disabled user's password by setting it to "Valid" in the User Login Setting screen.

User Login Setting screen



Three
successive
mistakes

User Login Setting screen



*Please use the component parts provided by us for these security functions.