

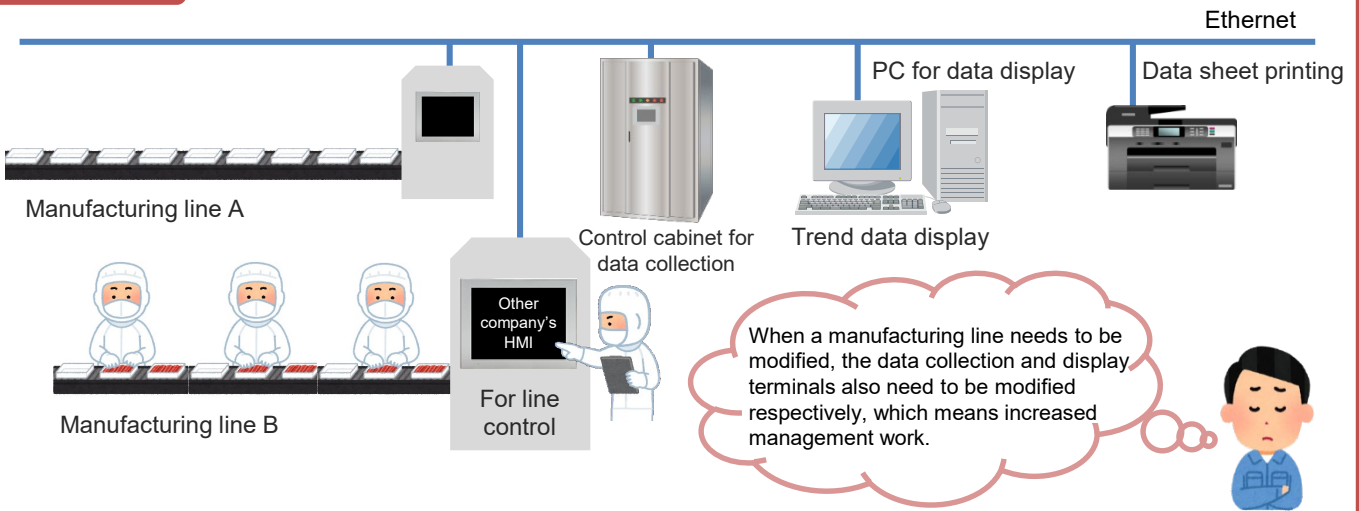
# <Proposal for Improving Operation> Combine Touch Panel and PC Functions by Introducing the X1 Series!

## Features of the X1 series

The X1 series is a new MONITOUCH model developed as an edge computer for building smart production sites. In addition to its function as a control HMI, a Windows operating system is featured to allow the use of Windows apps at the production site.

### Before

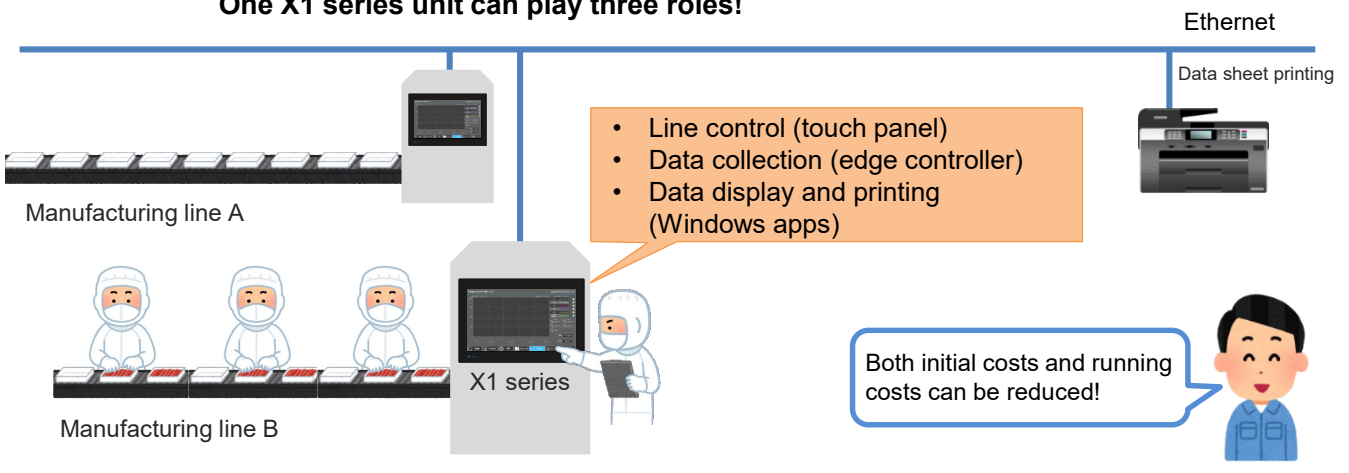
Initial costs are large because line control HMIs, a control cabinet for data collection, and a PC for printing out data sheets and displaying trend data are all required.



## Optimize by using the X1 series!

### After

Functions of the control cabinet for data collection and PC for printing data sheets and monitoring trend data are covered by the X1 series!  
One X1 series unit can play three roles!



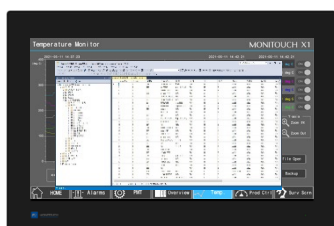
**Operations that are possible by using the X1 series**

• **Line control (touch panel)**



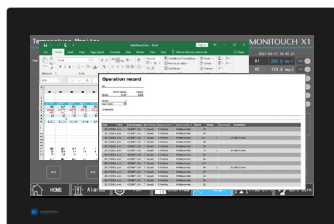
- By using as the HMI for line control, monitoring and operation of lines are possible.
- The HMI screen is displayed at power ON, allowing for easy operation without being aware of the Windows operating system.

• **Data collection (edge controller)**



- Data can be collected by using the MES interface function of the X1 series.

• **Data display and printing (Windows apps)**

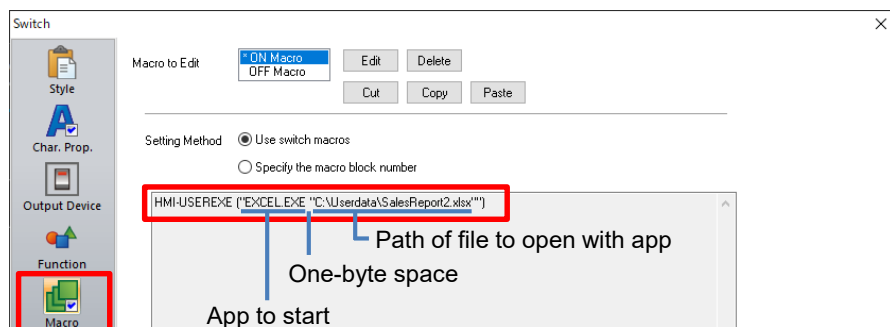


- Collected data can be displayed using Windows apps.
- Printing is possible from the X1 series unit by connecting with a network printer.

**How to start a Windows app**

**Windows apps can be started on the X1 series using the "HMI-USEREXE" macro command.**

Example: Starting Excel using a switch



\* For information on macro commands, refer to the X1 Series Reference Manual 2 or the V9 Series Macro Reference Manual.