

Introducing a Method to Optimize Work for Replacing Azbil's DMC10 Module-type Digital Controller with the NX Series Network Instrumentation Module

How is work optimized?

When Azbil's DMC10 module-type digital controller is connected to MONITOUCH and the controller is to be replaced with Azbil's NX series network instrumentation module, the DMC10 addresses used in the screen program on MONITOUCH can automatically be converted to addresses for the NX series!

Before

V9 series



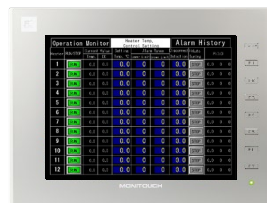
RS-485

DMC10



After

V9 series



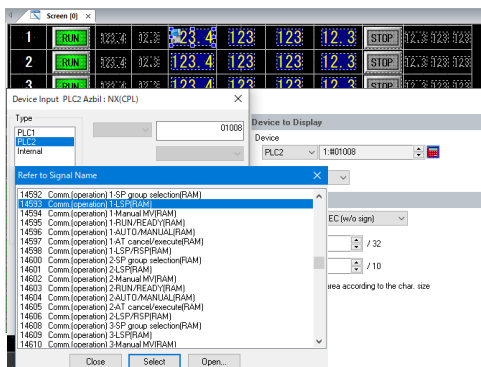
Ethernet or RS-485

NX series



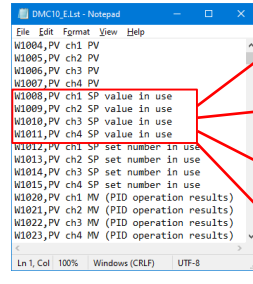
Convert

V-SFT Ver. 6

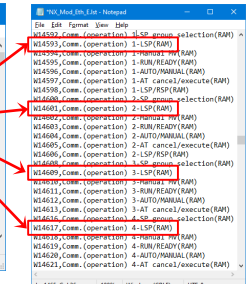


List files

DMC10 list file



NX list file



Address conversion map

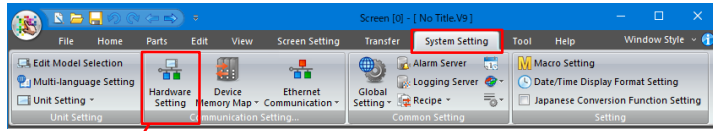
| Target Channel | Item | DMC10 address | | NX address | |
|----------------|-----------------------|---------------|---------|------------|---------|
| | | RAM | ROM | RAM | ROM |
| | | Decimal | Decimal | Decimal | Decimal |
| CH1 | PV value | 1004 | --- | 18960 | --- |
| | SP value in use | 1008 | 5008 | 14593 | 30977 |
| | AUTO/MANUAL | 1028 | 5028 | 14596 | 30980 |
| | RUN/READY | 1032 | 5032 | 14595 | 30979 |
| | AT stop/start | 1040 | 5040 | 14597 | 30981 |
| | Proportional band (P) | 1075 | 5075 | 14848 | 31232 |
| | Reset time (I) | 1076 | 5076 | 14849 | 31233 |
| | Rate time (D) | 1077 | 5077 | 14850 | 31234 |
| | Manual reset (RE) | 1078 | 5078 | 14851 | 31235 |



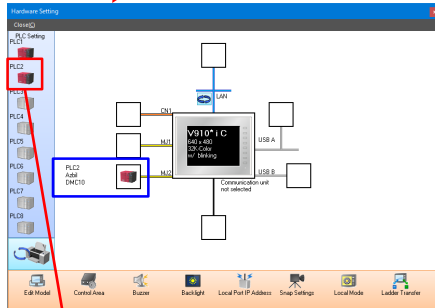
I wish I could automatically convert addresses for items that are the same when changing from DMC10 to NX ...

Changing the connected device

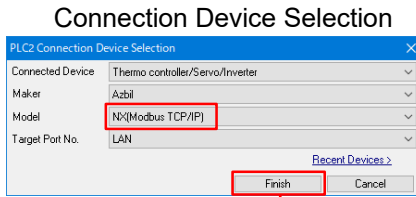
■ Schematic of changing the connected device in V-SFT version 6



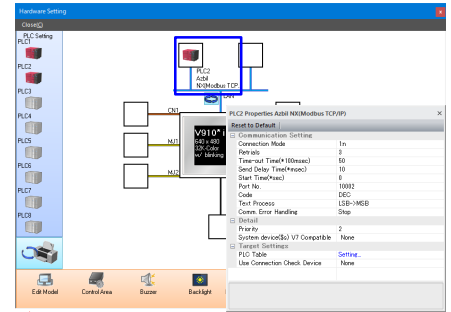
Hardware Settings



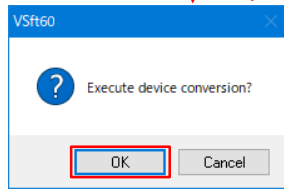
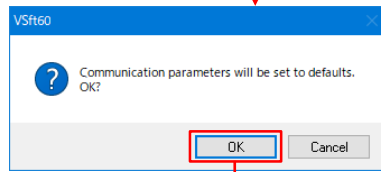
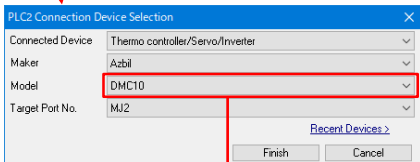
Connection Device Selection



Hardware Settings



Connection Device Selection



This message is displayed when changing from the DMC10 to any of the following four models:

- NX (CPL)
- NX (CPL) (Ethernet TCP/IP)
- NX (Modbus RTU)
- NX (Modbus TCP/IP)

Click [OK] and addresses will be converted according to the conversion map.

Replacing MONITOUCH

■ Conversion is also easy when replacing MONITOUCH!

When the DMC10 is connected to the V6, V7, or V8 series and the system is to be replaced with the V9 series and NX series, just simply change the editing model and connected device in the screen program to complete the replacement work!

