

<X1 Series: Useful Information>

The 2-split screen function improves visibility and operability!

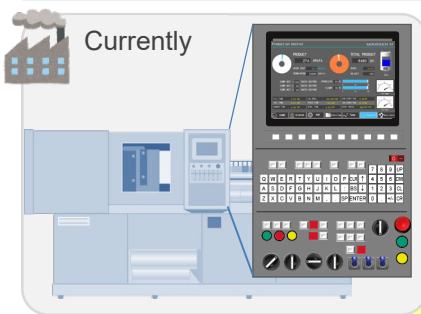
What is the multi-display 2-split screen function?

This is a function for splitting the X1 series unit screen into two segments, either right and left or top and bottom, and showing separate screens on each. Dual screen display is possible without an external display.

Landscape orientation



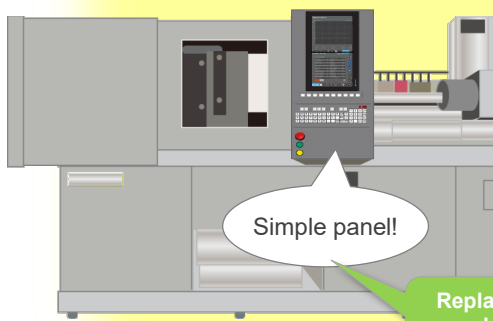
Portrait orientation



By using the multi-display 2-split screen function...

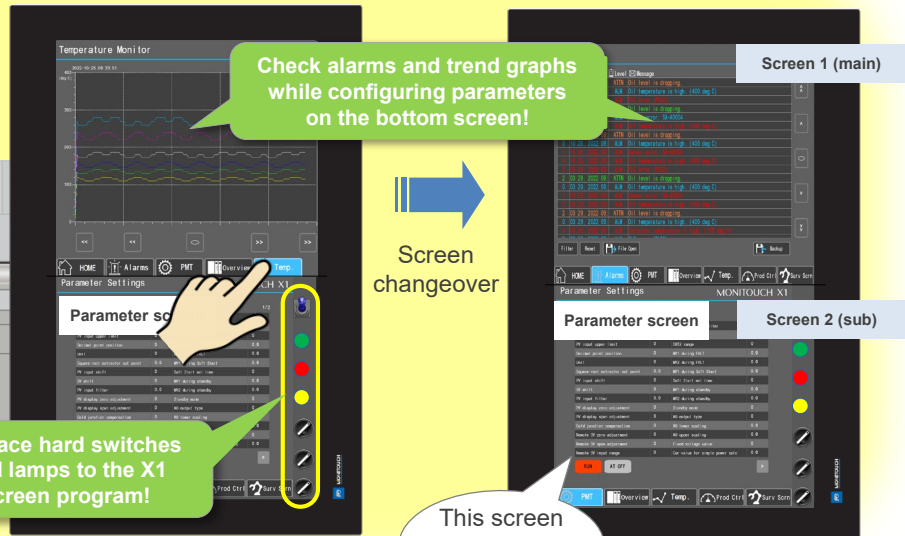
Point 1

Asynchronous screen display is possible!
A lot of information can be displayed at once!



Simple panel!

Replace hard switches and lamps to the X1 screen program!



Check alarms and trend graphs while configuring parameters on the bottom screen!

Screen changeover

This screen remains the same!

The initial screen at power on can be specified individually for the main and sub screens!

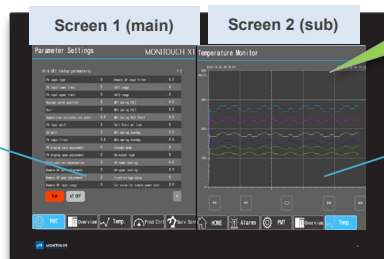
Start working efficiently right from the beginning of operation!



Power ON

Screen No. 0

Screen No. 100



Point 2

The X1 series is equipped with a Windows OS! Linking with Windows devices is possible!

Collect and process data on an X1 and send only the aggregated data to the host server!



Host server

Connect with devices supporting Windows.

Windows printer
(Hard copy / Data sheet printing)

Network camera

Point 3

The X1 series functions as an edge controller while also improving operability!

Remote monitoring



Start Windows apps

Camera image

Excel

Point 4

Display and operation of the operation screen and a Windows user app is possible!

VNC client*

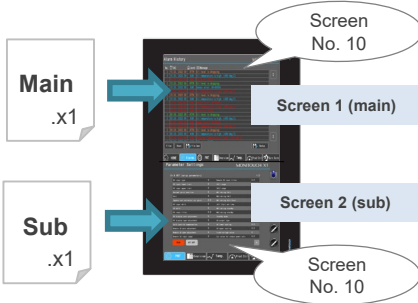
* VNC software must be installed on the X1 unit.

Linkage to Windows apps and host networks can be done with a single unit

Screen programs

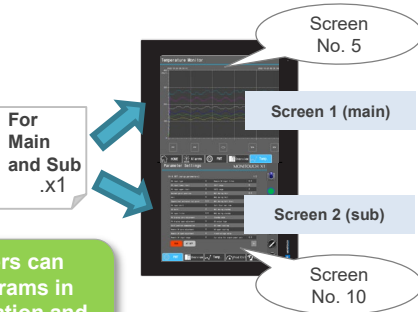
Choose a screen program configuration from two patterns!

Prepare separately for main and sub screens



or

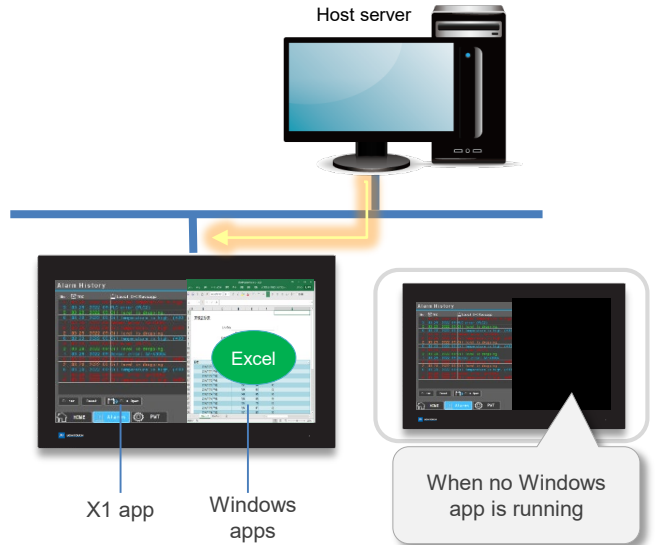
Share one file



Application engineers can manage screen programs in consideration of operation and future maintenance!

Other

It is possible to dedicate the main screen to the X1 app and the sub screen to a Windows app! Operability and visibility is improved with the apps aligned!



* For details, refer to "8.4 Starting Applications" in the X1 Series Reference Manual 2.

