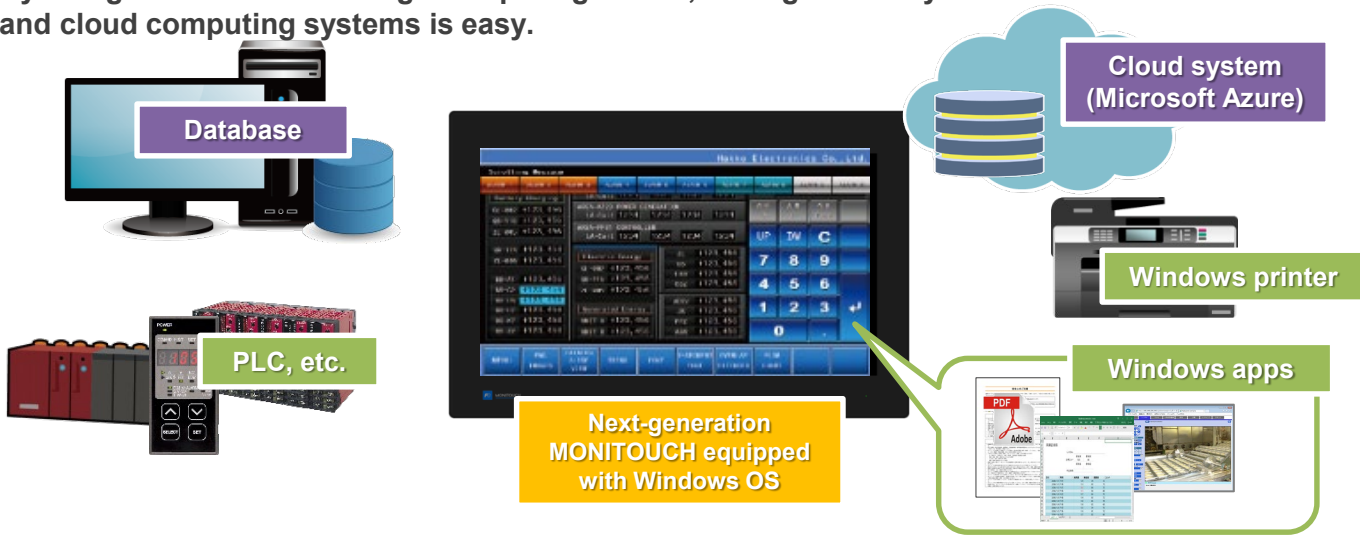


<X1 Series: Useful Information>

Enhance Information Sharing and Productivity at Manufacturing Sites! - Multi-Display: Display Screen Expansion -

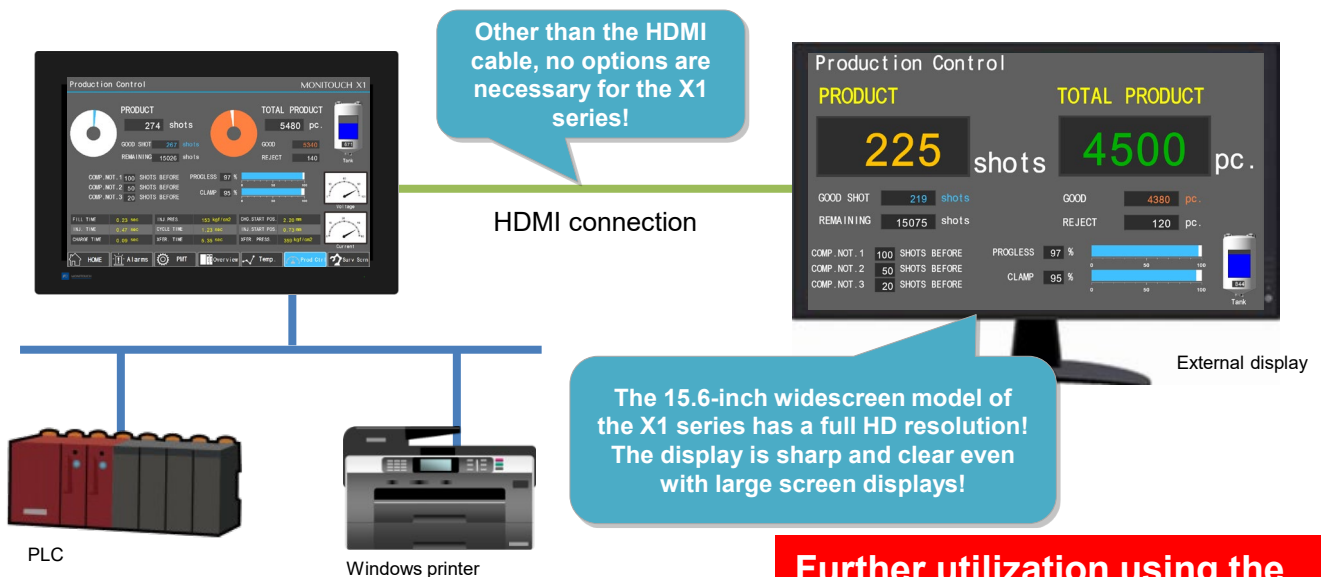
What is the X1 series? (Overview)

The X1 series is a next-generation MONITOUCH that supports functions of the conventional MONITOUCH and is equipped with a Windows OS. By using the X1 series an edge computing device, linking with IT systems such as databases and cloud computing systems is easy.



What is the multi-display screen expansion function? (Using an external display)

This function can display different screens on the X1 series unit and an external display connected to the X1 series via the HDMI port provided as standard.



Further utilization using the Multi-display function →

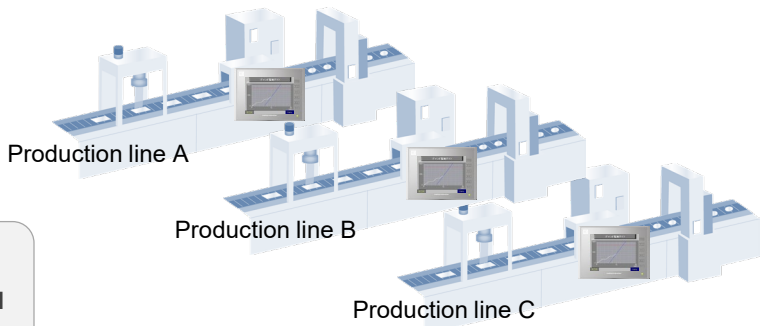
Example of multi-display utilization



Currently

I want to promote visualization and traceability to improve productivity and efficiency at the production site, but currently...

- Information isn't shared among administrators and operators...
- I don't want to use a PC for centralized monitoring...



By using the multi-display function of the X1 series...

Point 1

Visualization by building an Andon system shares information for a smooth workflow!

Point 2

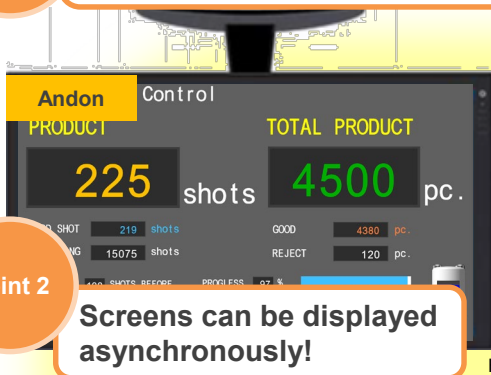
Screens can be displayed asynchronously!

Point 3

Windows apps and the operation screen can be displayed/operated at the same time!

Point 4

Analyze and improve the production site using only important data. It also reduces the load on the server!



Connect with devices supporting Windows.



Windows printer (Hard copy / daily report)

HDMI connection

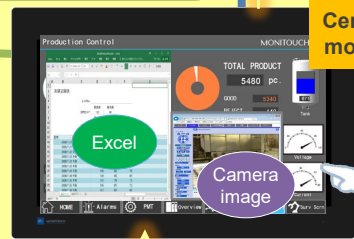
Use the X1 series as an edge controller to collect various data from the production site, process that data, and send only important data to the host server!



Host server

Network camera

Centralized monitoring



Send traceability data and camera images from each line!

Ethernet

Production line A

Production line B

Production line C

Many more features are available as below.

Asynchronous screens

The initial screen at power on can be specified individually!



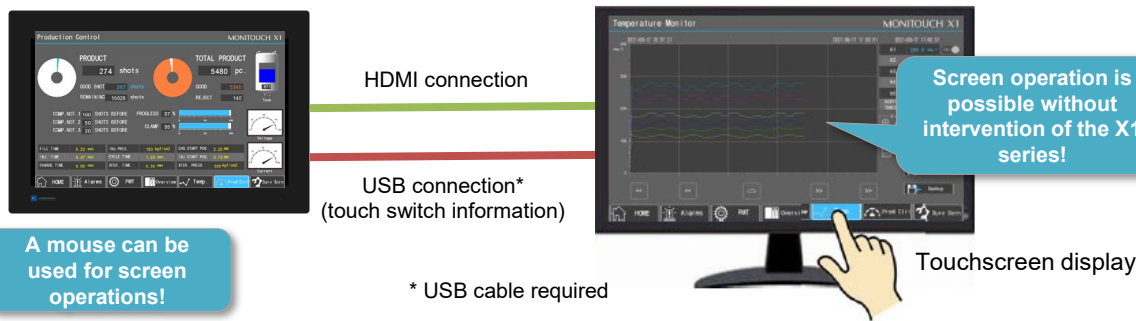
Installation

Install in either portrait or landscape orientation according to the available space!



Screen operation

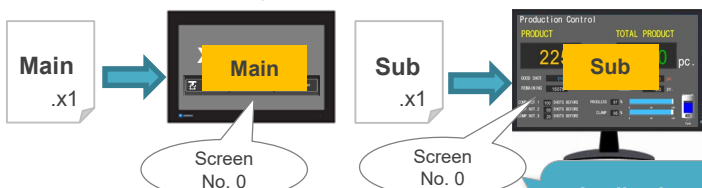
If using a touchscreen display, touch operations on the display are possible!



Screen programs

Choose a screen program configuration from two patterns!

Prepare separately for main and sub screens



For Main and Sub .x1

Share one file



Application engineers can manage screen programs in consideration of operation and future maintenance!

