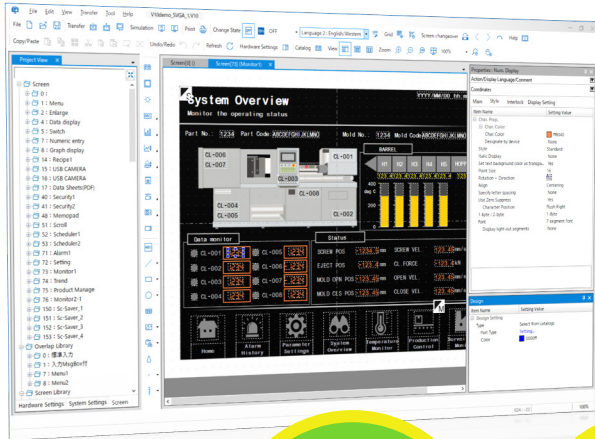


## MONITOUCH Configuration Software Smart Editor Release special issue

Screen creation has evolved from “learned” to “intuitive” with our smart configuration software.



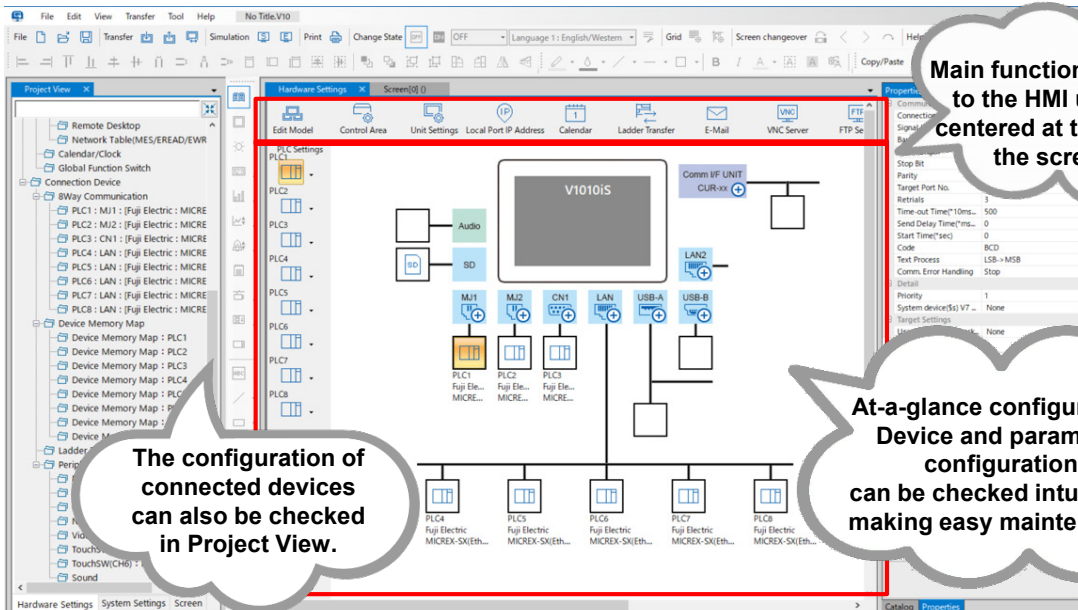
## MONITOUCH Configuration software Smart Editor

Our aim is to realize a simple editing workflow and improved visibility that matches the needs of the times. We support stress-free screen creation by enabling intuitive operation.



### User Interface with improved visibility

Intuitive operation is achieved through a unified UI with simple icons. Hardware settings enables intuitive configuration and checking of connected devices.



Main functions related to the HMI unit are centered at the top of the screen!

The configuration of connected devices can also be checked in Project View.

At-a-glance configuration! Device and parameter configuration can be checked intuitively, making easy maintenance.

Centralized configuration

## Project view with all file settings consolidated Property window containing all individual settings

Settings of the entire project are consolidated into Project View.  
Hierarchic tree configuration provides easy confirmation and configuration of the entire project.  
Settings of each parts are centralized into Properties and Design Properties.

**<Project View>**

- MONITOUCH Settings
  - Edit Model
  - Control Area
  - Unit Settings
    - Buzzer
    - Backlight
    - Local Mode
    - Splash Screen
    - System/Mode Switch
    - Blink/Flash
    - General Settings
  - Ethernet
    - Local Port IP Address
    - E-Mail
    - FTP Server
    - Data Transfer Service (FTP client)
      - Data Transfer Settings
      - Data Transfer Viewer Setting
    - Remote Desktop
    - Network Table/MES/ERAD/EWR
    - Calendar/Clock
    - Global Function Switch
    - Connection Device
      - 8Way Communication
        - PLC1 : [Without PLC Connection]
        - PLC2 : No connection
        - PLC3 : No connection
        - PLC4 : No connection
        - PLC5 : No connection
        - PLC6 : No connection
        - PLC7 : No connection

- Font
- Storage
- SRAM
- Password
- Alarm
  - Flowing Message
  - Alarm BlockNo.1
  - Alarm BlockNo.2
  - Alarm BlockNo.3
- Logging
  - Logging BlockNo.0
  - Logging BlockNo.1
- String table
- Message
  - 10 :
  - 11 :
  - 12 :
  - 15 :
  - 31 :
  - 100 :
  - 127 :
- Comment
- Tag Database
  - 0
- Scheduler
- Operation Log
- Macro Settings
- Security
- PDF Viewer
- Video Player
- Picture Viewer
- Recipe
  - 0
- Screen
- 0 : Menu
- 2 :Enlarge
- 4 : Data display
- 5 : Switch
- 7 : Numeric entry
- 8 : Graph display
- 14 : Recipe1
- 15 : USB CAMERA
- 16 : USB CAMERA
- 17 : Data Sheets(PDF)
- 40 : Security1
- 41 : Security2
- 48 : Memopad
- 51 : Scroll
- 52 : Scheduler1
- 53 : Scheduler2
- 71 : Alarm1
- 72 : Setting
- 73 : Monitor1
- 74 : Trend
- 75 : Product Manage
- 76 : Monitor2-1
- 150 : Sc-Saver\_1
- 151 : Sc-Saver\_2
- 152 : Sc-Saver\_3
- 153 : Sc-Saver\_4
- Overlap Library
  - 0 : Standard entry
  - 1 : w/MsgBox
  - 7 : Menu1

**<Properties>**

Properties : Pie Graph

Action/Display Language/Comment

Coordinates

Main	Style	Display Setting
Item Name	Setting Value	
Contents	<ul style="list-style-type: none"> <li>Device: \$u40302</li> <li>Input Type: DEC-/BCD</li> <li>Data Length: 2-Word</li> <li>Type: Standard</li> <li>Target Value(St...: 0</li> <li>Minimum: 0</li> <li>Maximum: 15300</li> <li>Display the sca...: None</li> </ul>	
Alarm	<ul style="list-style-type: none"> <li>Use Alarm: None</li> </ul>	
Detail	<ul style="list-style-type: none"> <li>Process cycle: Low Speed</li> <li>Add animation ...: None</li> <li>ID: 0</li> </ul>	

**<Design Properties>**

Design

Item Name	Setting Value
Design Setting	Select from catalogs
Type	Select from catalogs
Part Type	Setting...
Color	000000

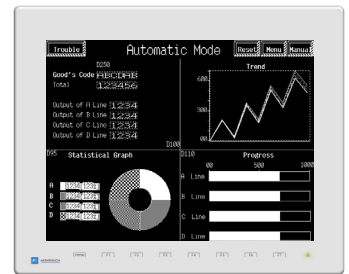
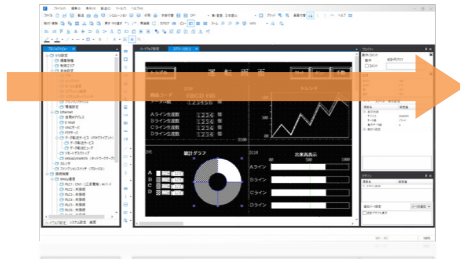
Reduced man-hours

## Compatibility with V-SFT

Screen data of legacy models created with V-SFT can be converted directly to the V10/V9/TS2000 series for editing.



## Smart Editor



MONITOUCH V10

## Product Lineup

There are different types of licenses for Smart Editor.

Site licenses are distributed on a worksite basis, and can be installed on an unlimited number of computers within the same worksite. (The price is the same as for 10 licenses.)

Model	Product
SMED-DVD	MONITOUCH Smart Editor Single license
SMED-DVD-L□□ *1	MONITOUCH Smart Editor Multiple license
SMED-DVD-SL	MONITOUCH Smart Editor Site license
SMED-DVD-VUP *2	MONITOUCH Smart Editor DVD for Version upgrade

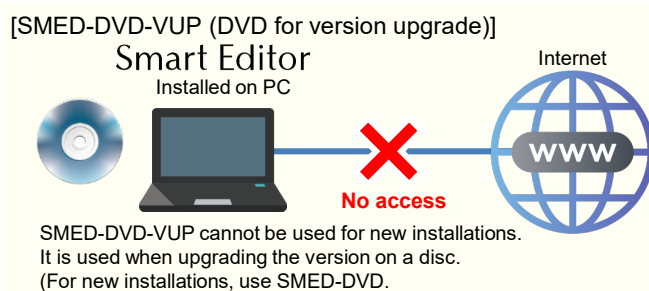
\*1 “□” indicates the number of licenses. The price varies depending on the number of licenses.

For details, please contact your sales representative or Hakko Electronics.

\*2 This is a DVD for version upgrading.

It is for those who have already installed Smart Editor.

As before, it is also possible to upgrade from our website (free of charge, membership registration required).



## Specifications/System Requirements

### Specifications

Editable models	X1/V10/V9/TECHNOSHOT/V8/UG40/S8 TELLUS Ver.5/TELLUS Ver.4/TELLUS Ver.3/TELLUS-HMI iPad
-----------------	---

### System Requirements

PC	PC/AT compatible computer running Windows
OS	Windows10 (32bit, 64bit) / Windows11 (64bit)
CPU	Windows 10: Intel Core 2 Duo 2GHz or higher recommended Windows 11: 2 cores or higher (64 bit) or System on a Chip (SoC)
Memory	8GB or more recommended
Hard disk	When installed: 5.0 GB or more
Disc drive	DVD-ROM drive
Display	1920 × 1080 (Full HD) or greater
Other	- Microsoft .NET Framework 4.0 or higher - Visual Studio 2015-2022 Visual C++ Redistributable packages (Automatically installed upon installation, if missing)

