

## <Utilization Example> Utilization of the FTP Function

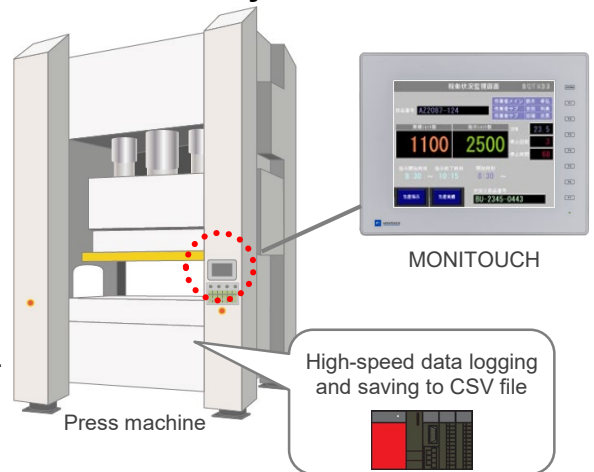
### Before

It would be nice to be able to easily and safely check data of equipment that is being collected at high speed from a remotely-located office.

How can I retrieve logging files?



Production administrator



### Problem

- The PLC is located at the back of the cabinet where it is hard to access, making it difficult to take out the SD card.
- It is not possible to take out the SD card while the PLC is operating.
- A PC cannot be added to the control network for security reasons.

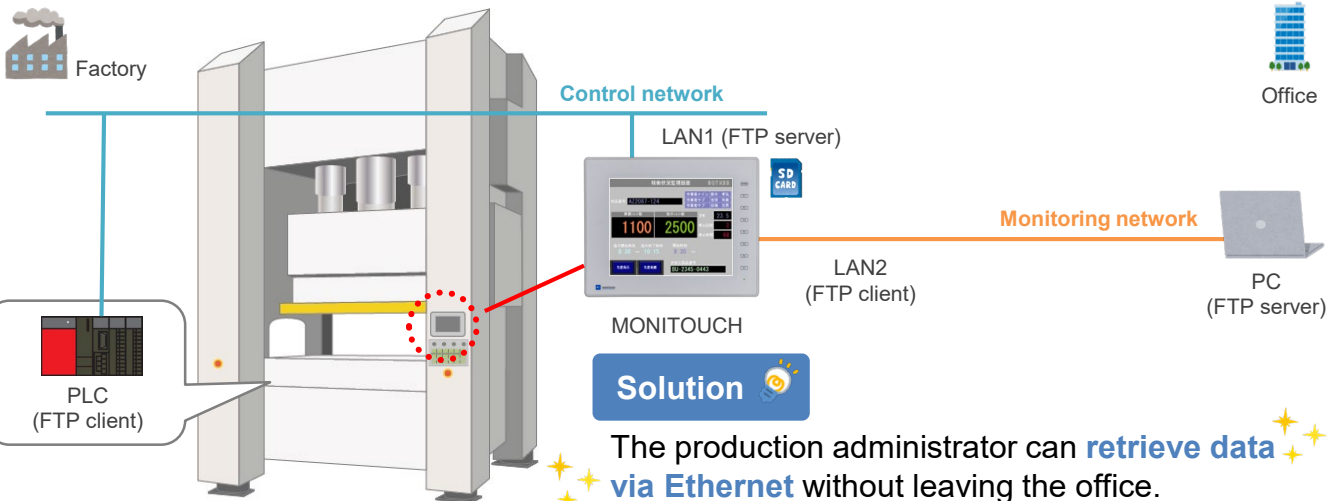


Is there any way to retrieve logging files?

Solve this problem easily by using the MONITOUCH with 2ch LAN ports!

### After

Files can be transferred if FTP server and client functions are available at both ends!



### Solution

The production administrator can **retrieve data via Ethernet** without leaving the office.

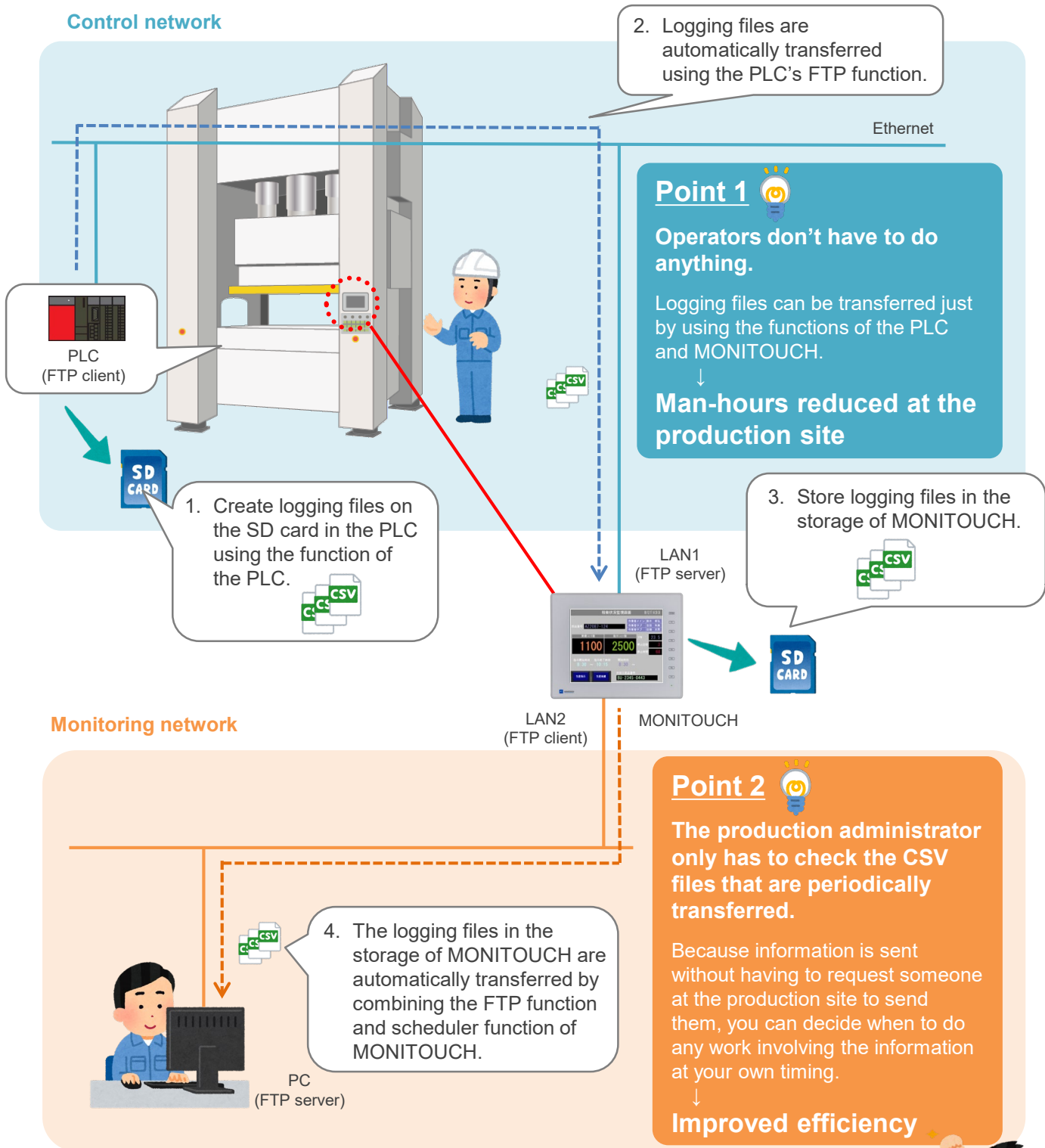
### Proven PLCs

- MITSUBISHI ELECTRIC's QnUDV series CPU, built-in LAN port
- MITSUBISHI ELECTRIC's high-speed data logger unit "QD81DL96"
- Keyence's KV-7500 series, built-in LAN port
- Keyence's KV-8000 series, built-in LAN port



By analyzing data, we can search for hidden problems and inefficiencies, and thus make improvements!

Operation schematic



MONITOUCH's FTP function is sure to make things easier!

