

# **[Web Machine Interface]**

## **Procedures for changing the IP address settings of the server when switching the authentication server**

December 2020

Ver. 1.0



## **Outline**

Due to the aging of the server used for Web Machine Interface and to ensure a stable supply of services in the future, we will be switching to a new server in December 2020.

You must change the IP address of the authentication server on the local screen of the MONITOUCH after the switchover to the new server.

This manual describes the procedures for changing the IP address settings of the authentication server in the local screen mode.

- \* For more information on how to change to the local screen, please refer to the attached excerpt (Switching to Local Mode) from "V9 Series Troubleshooting/Maintenance Manual".

## **Reason for Switching Servers**

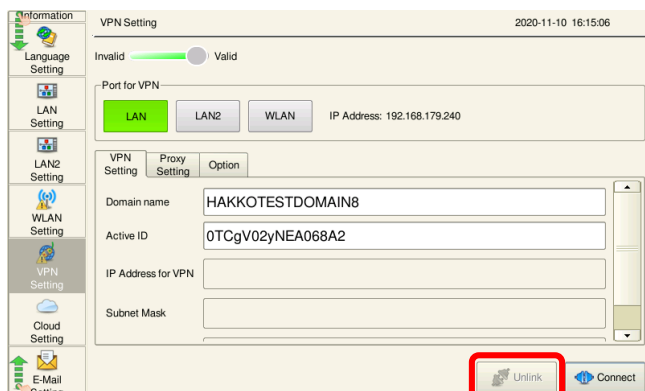
We would like to implement the switchover as soon as possible for the following advantages.

- Security enhancements including countermeasures against cyber attacks.
- Improved durability in consideration of disasters to achieve a stable operating environment.

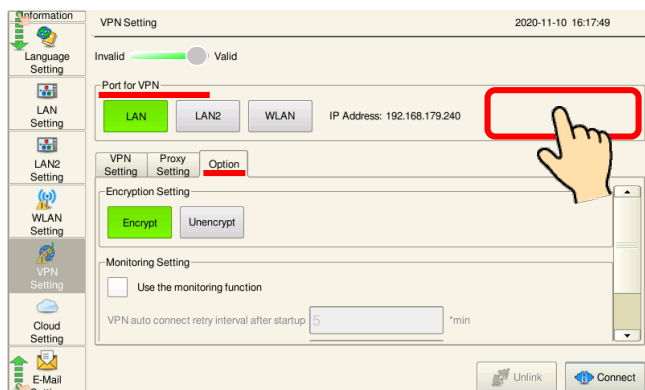
## **Schedule for Server Switching**

December 20, 2020 09:00 – 16:00 (UTC +9)

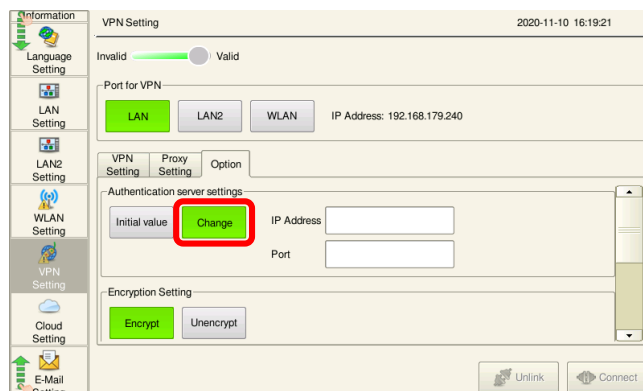
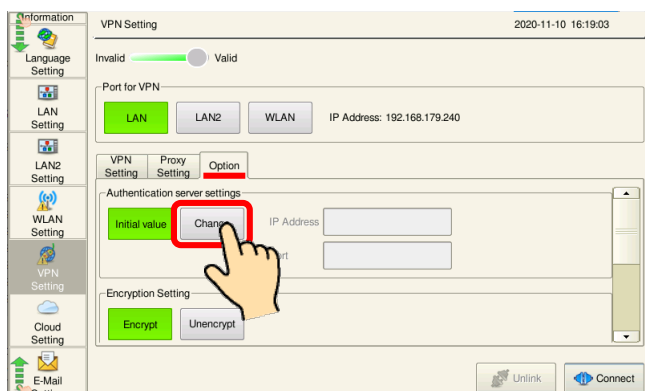
1. From the VPN Setting screen, disconnect the VPN connection.  
\*When the VPN is disconnected, the “Unlink” button will be grayed out.



2. Click the Option tab. Press and hold the red-bordered area in "Port for VPN" for 5 seconds.



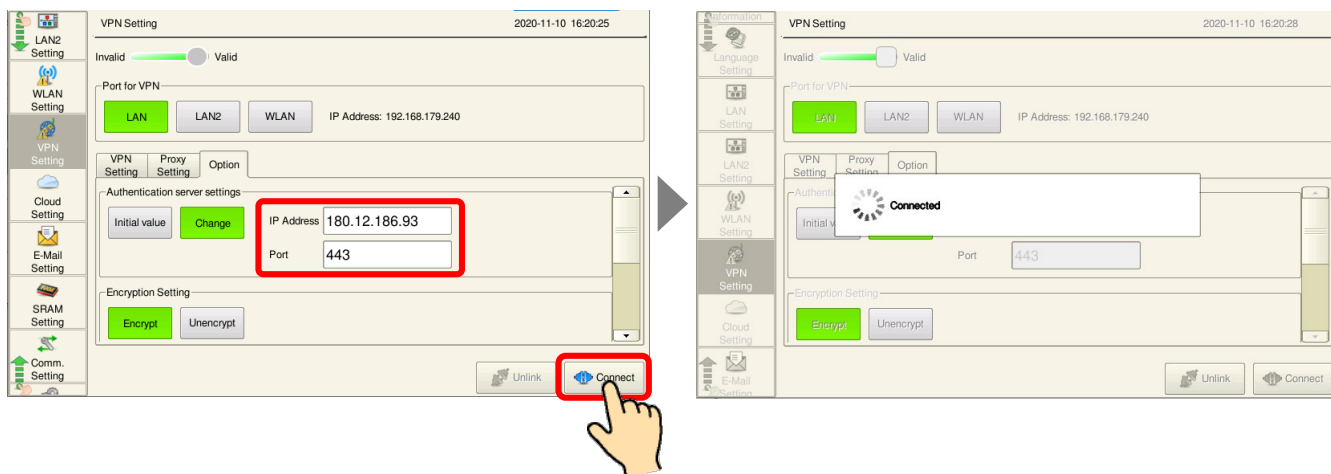
3. Authentication server settings appear on the Option tab. Click “Change”.



- Enter the following information (IP address and port) to Authentication server settings and then click “Connect”.

**IP address : 180.12.186.93**

**Port: 443**



- Connection to the new server is successful when the “VPN Setting” window pops up. The IP address for the VPN (virtual IP address) appears on it. Click “OK” to complete.



This completes the change of the authentication server IP address setting for server switching.



The IP address of the server set up in this procedure is stored in the MONITOUCH while the VPN setting is enabled.

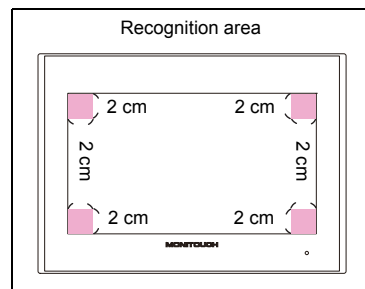
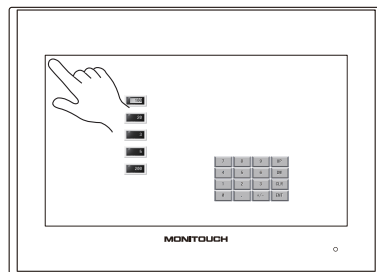
However, if you disable the VPN settings, you will need to reconfigure the server in this way.

# 1. Switching to Local Mode

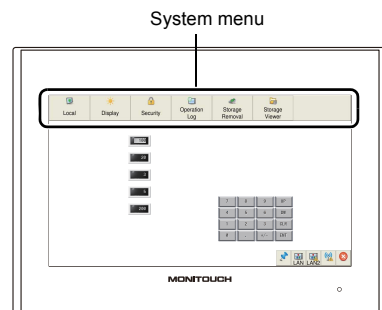
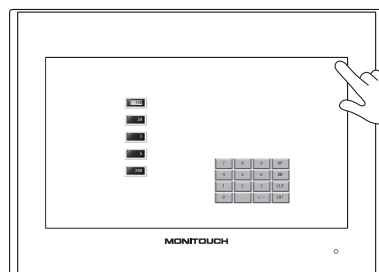
The procedure for switching from RUN mode to Local mode differs depending on the V9 series model.

## Advanced Model

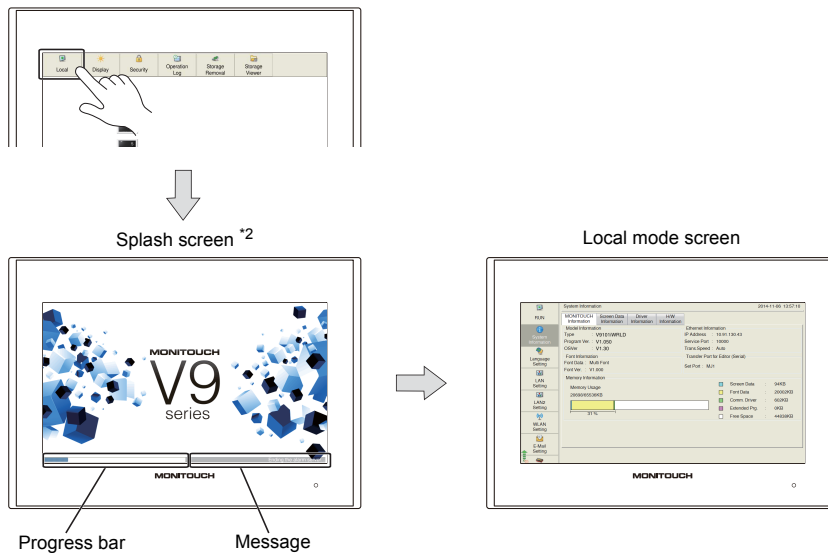
1. Press one corner <sup>\*1</sup> for at least 2 seconds and release your finger when there is a beep.



2. Then within one second, press a different corner <sup>\*1</sup> and hold for at least 2 seconds to display the system menu.



3. Press the [Local] switch on the displayed system menu.



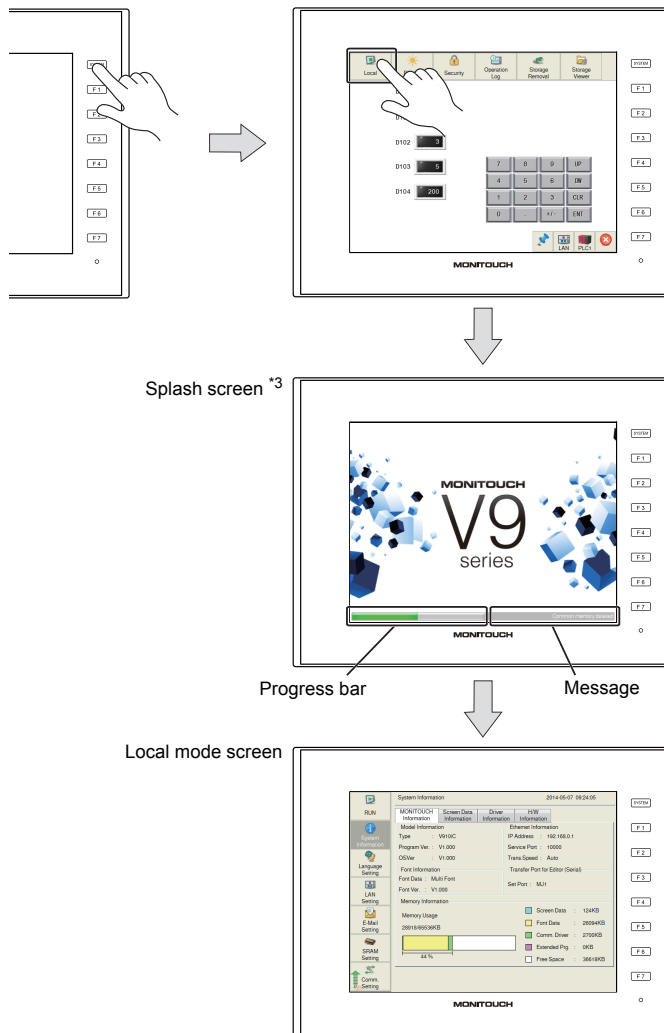
- \*1 If any of the items given below are placed in a corner on the screen, the system menu will not be displayed. Be sure to press a corner where none of the items are placed. If these items are placed in all four corners of the screen, switch the screen to one that has open corners and perform the above procedure to display the system menu.

Switches, data display parts with switches, display areas, scrolling messages, slider switches, scroll bars, and table data display parts

- \*2 The splash screen can be changed as desired. For details, refer to V9 Series Reference Manual 2.

## Standard/Lite Models

Press the [SYSTEM] switch to display the system menu <sup>\*1</sup> and then press the [Local] switch <sup>\*2</sup>.



- <sup>\*1</sup> If the system menu does not appear by pressing the [SYSTEM] switch, [System Switch Prohibited] is selected (page 1-6). To enable the [SYSTEM] switch, hold down the [F7] switch with the [SYSTEM] switch for the time specified for [Change-over Time] (max. 30 seconds). [Change-over Time] is set in the screen program.
- <sup>\*2</sup> If the [Local] switch does not appear in the system menu by pressing the [SYSTEM] switch, [Mode Switch Prohibited] is selected. To enable the switch, press the [SYSTEM] switch to display the system menu, and hold down the [F7] switch with the [F1] switch for the time specified for [Change-over Time] (max. 30 seconds). [Change-over Time] is set in the screen program.
- <sup>\*3</sup> The splash screen can be changed as desired. For details, refer to the V9 Series Reference Manual 2.