



## Smart Editor Ver. 1.1.1.0 Update Information

	V10	V9	TS4000	TSi/TS	V8i(N)/V8(N)	X1
System program	Ver. 1.500	Ver. 3.300	Ver. 1.100	Ver. 2.450	Ver. 2.390	Ver. 2.000 <sup>*2</sup>
OS	Ver. 1.60 <sup>*1</sup>	Ver. 5.00 <sup>*1</sup>	Ver. 1.00			

<sup>\*1</sup> Storage is necessary for updating.

<sup>\*2</sup> Please download the X1 update program from our website. For the update procedure, refer to the "Update procedure" provided with the update program.

### Connection

#### 1 Additional connectable device: FATEK Automation M Series (Ethernet TCP/IP)

Applicable model: V10, V9, TS4000, TSi, X1

Device: FATEK Automation M Series (Ethernet TCP/IP)

#### 2 Additional connectable model: MITSUBISHI ELECTRIC FX5S Series

Applicable model: V10, V9, TS4000, TSi/TS, V8, X1

Device: MITSUBISHI ELECTRIC FX5U/5UC/5S Series

MITSUBISHI ELECTRIC FX5U/5UC/5S Series (Ethernet) TCP/UDP

#### 3 Connectable device extended specifications: MITSUBISHI ELECTRIC

FX5U/FX5UC/FX5S Series supported device memory added

Applicable model: V10, V9, TS4000, TSi/TS, X1

Device: MITSUBISHI ELECTRIC FX5U/5UC/5S Series

MITSUBISHI ELECTRIC FX5U/5UC/5S Series (Ethernet)

Device memory: Step relay (S)

Long counter (LCS: Contact, LCC: Coil, LCN: Current value)

Long index register (LZ)

### Function

#### 1 Recipe using the built-in storage supported

Applicable model: V10, X1, TELLUS5

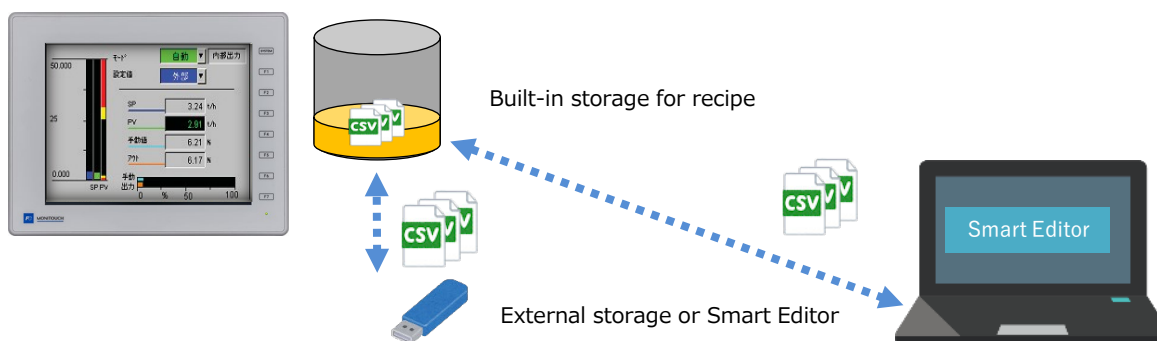
\* TS4000 is already supported.

##### <Overview>

When using the recipe function, recipe files (.CSV or .BIN) can be stored in built-in storage of the unit.

It can be used even at sites where it is difficult to carry in storage devices due to security enhancements.

Also, recipe files can be overwritten to the built-in storage not only by using external storage, but also by transferring them directly from the Smart Editor.



##### <Setting location>

Project View -> [System Settings] tab -> [Recipe] -> [Operating Storage Setting] -> [Use internal storage] checkbox

\* For details about the transfer method etc., refer to 15 Recipes in the "Reference Manual 1".

## 2 List box / Drop-down list

Applicable model: V10, X1, TELLUS5

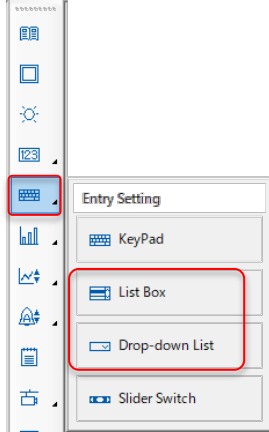
\* TS4000 is already supported.

### <Overview>

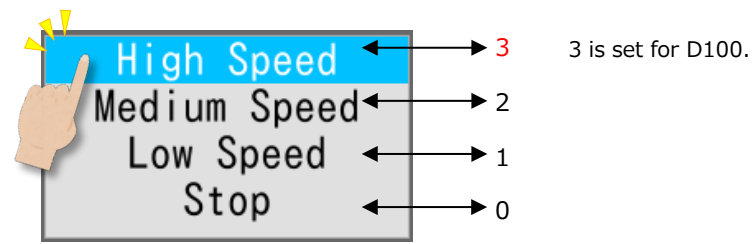
When entering numerical values or character strings, values can be set by selecting from preset item names.  
Input screens can be easily created without using word operations or macros.

### <Setting location>

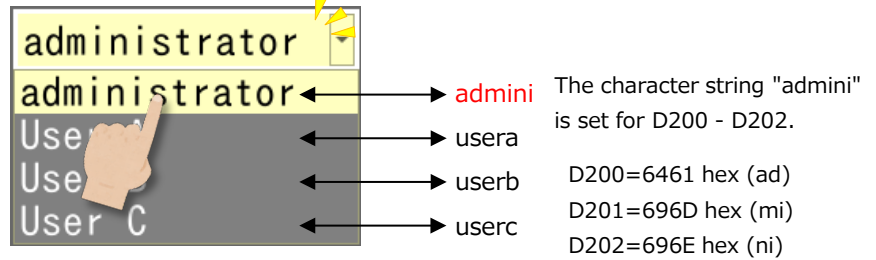
Toolbar for drawing -> click and hold [Entry]  
-> select [List Box] or [Drop-down List]



- List box example: D100, DEC



- Drop-down list example: D200 - D202 (6 bytes), character string



\* For details, refer to the "Reference Manual 1".

## 3 2D code display of character strings

Applicable model: V10, X1, TELLUS5

**\*OS updating is necessary**

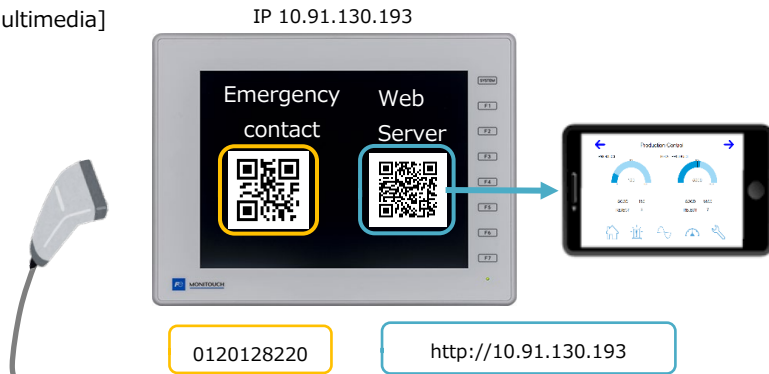
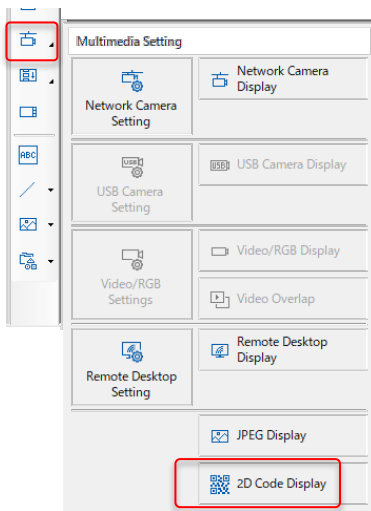
\* TS4000 is already supported.

### <Overview>

2D codes can be created and displayed with MONITOUCH. 2D code can be read with smart devices on hand to view videos such as operating instructions and to access to the websites linked with the Web Server function.  
When 2D codes are used for production information, barcode reading is also available.

### <Setting location>

Toolbar for drawing -> click and hold [Multimedia]  
-> [2D Code Display]



\* For details, refer to the "Reference Manual 2".

## 4 Data sheet printing with the font size fixed at 12 points (\$s1809)

Applicable model: V10, V9

\* TS4000 series always prints at 12 points.

Font setting: TrueType font

### <Overview>

The font size can be fixed at 12 points when printing data sheet using system device \$s1809.

### [System device]

Device	Setting value	Notes
\$s1809	0: Print with the font size adjusted to the resolution of the HMI unit 1: Print with the font size fixed at 12 points	When setting to 0: V1015(14 points) V1010(12 points)

# Configuration Software

## 1 HMI search for transfers (Ethernet)

Applicable model: V10, X1 \* TS4000 is already supported.

### <Overview>

When transferring screen data via Ethernet, you can search for and detect MONITOUCH units on the same network group even if the IP addresses are unknown.

The search result shows the model types and the IP addresses, which helps to reduce transfer errors.



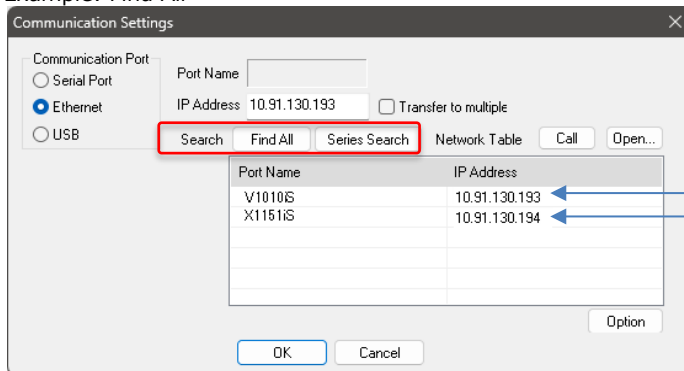
### <Setting location>

Go to the dialog box "Communication Settings"

(Communication Port: Ethernet) -> select [Find All] or [Series Search]

MONITOUCH units on the same network group will be displayed in the list.

### Example: Find All



If your PC has multiple LAN ports and the operation is unstable, please try the following:

- Disconnect unused LAN cables
- Disable unused network adapters

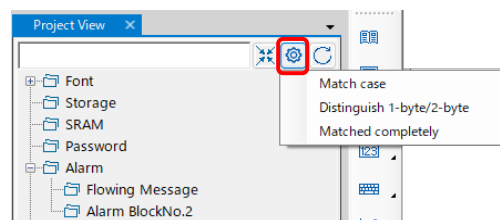
## 2 Operability improved

### ■ Project View

Search Options button has been added.

### [Option details]

- Match case
- Distinguish 1-byte/2-byte
- Matched completely



## 3 Edit model added

Model: X115-VIS  
TELLUS iPad-VIS

### <Overview>

Production line monitoring package X1-VIS is now available for editing.

\* X1-VIS is available only in Japan

