

# MONITOUCH PLUS EXPRESS

**Data collection (Point of Production System -Operation Management-)**

Issue No.16  
2009

## Advantages by using data collection for the operation management

- The operation management system can be introduced to your existing facilities easily. There's no need to modify a PLC program.
- Since you can start with 1 MONITOUCH, the system can be introduced at a low cost.
- Inputting the causes of shutoffs and defects enables more detailed analyses of the operation.
- A troublesome process will be obvious by showing the status of each process on a list all together, and that helps you improve production lines easily.

Improve production operating rates

## Grinder operation management system

It enables to grasp the status of production facilities and realizes an efficient facility improvement.

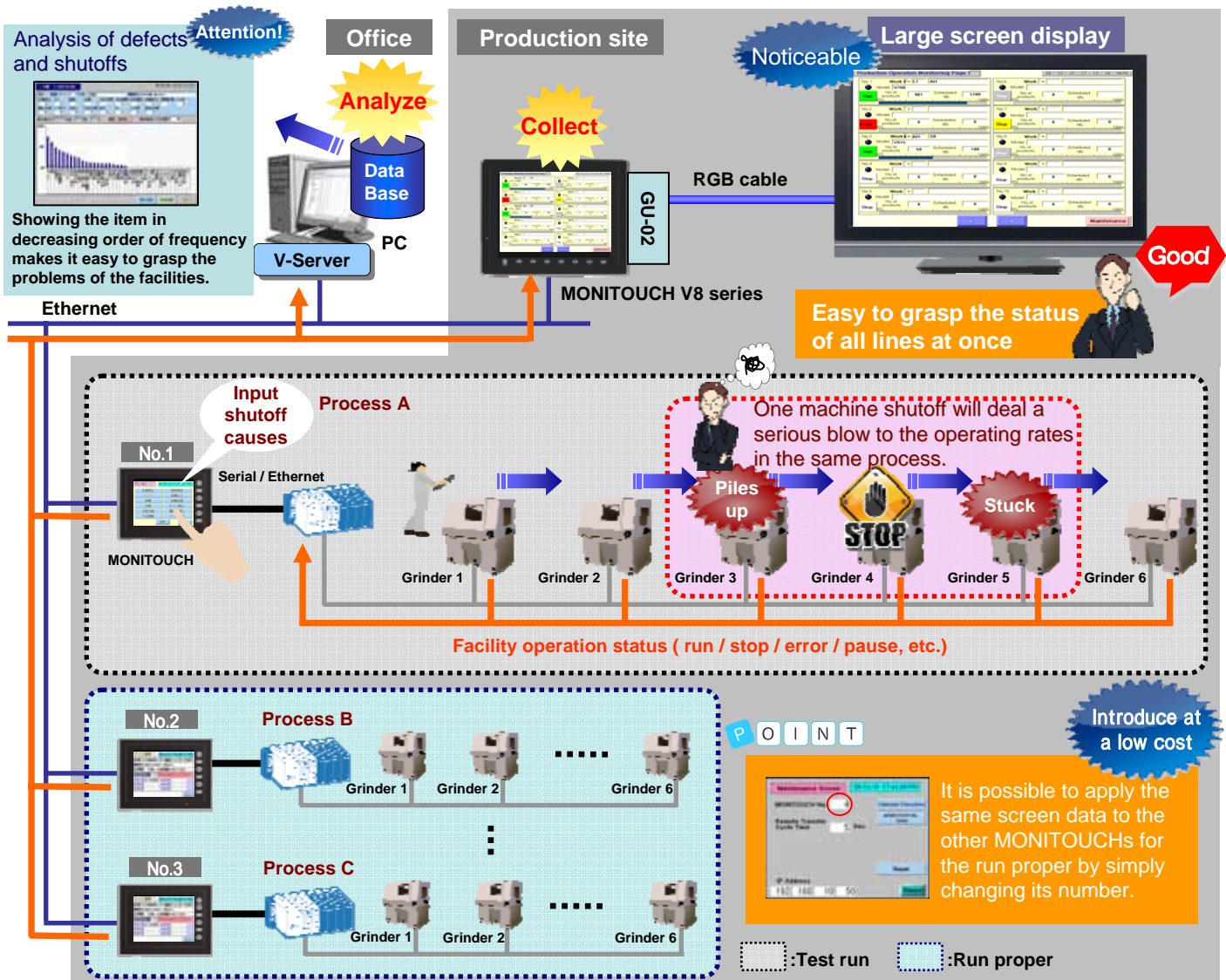
### Problem

Products piles up and gets stuck at the previous or next process due to the machine shutoffs in the process.



### Collecting & analyzing the operation status using MONITOUCH

The operation status of each process will be collected to the database. Analyzing these collected data helps you to figure out the problems.



## Point 1. Inputting the causes of shutoffs/defects (helpful for analyzing operating rates)

Using MONITOUCH allows you to get a clearer grasp of the operating rates and the takt time, which is one of the purposes of the operating management.

**Input the causes of shutoffs into the database through MONITOUCH!**

**Shutoff entry screen**

Cancel	Partial Measure
T.C.	Startup Failure
Breakdown	Backup Others
Check	Start Stoppage
Change Cutting Tool	Purchase Delay
Size Adjustment	Wait for Work

**Defects breakout entry screen**

Maladjustment	Bore NG	0
Plane roughness	Left	0
Cut, tool broken	Left slot	0
Chip off	Left side surface	0
Set mistake	Rust	0
Dent	Squareness	0
Oversized	Grinding swart	0

**POINT**

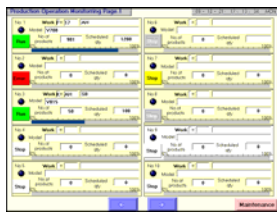
Besides the alarming, many other causes of shutoffs that are not able to be detected by PLC will be collected in detail.

**Good**

## Point 2. Monitoring all at once with the consolidated information

(useful for grasping the operation status)

Production items, scheduled/produced quantities, and details of the alarming of each process will be displayed on a list on the main monitor. It shows a whole line status at a glance.



Operating status displayed all together



Operating status displayed individually

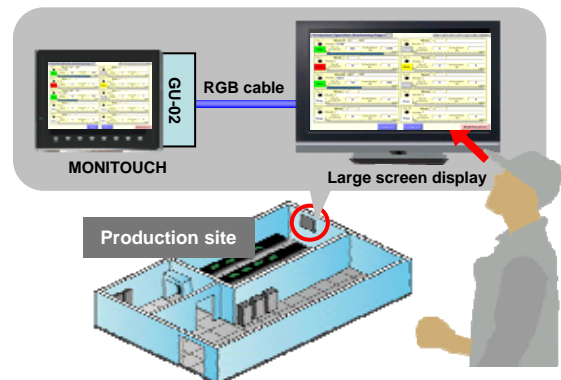
**POINT**

By grasping the production progress and the operating status, efficient production instructions will be given quickly.

**Good**

### A large screen display

MONITOUCH screens can be seen on a larger screen display by installing an RGB output unit (GU-02).



## Free version upgrade of the configuration software V-SFT-5



The configuration software (updated version) can be downloaded from the following website.

Website:

<http://www.hakko-elec.co.jp/en/download/09vsft5/index.html#02>