

V9 series control area

More flexible device setting for various controls.

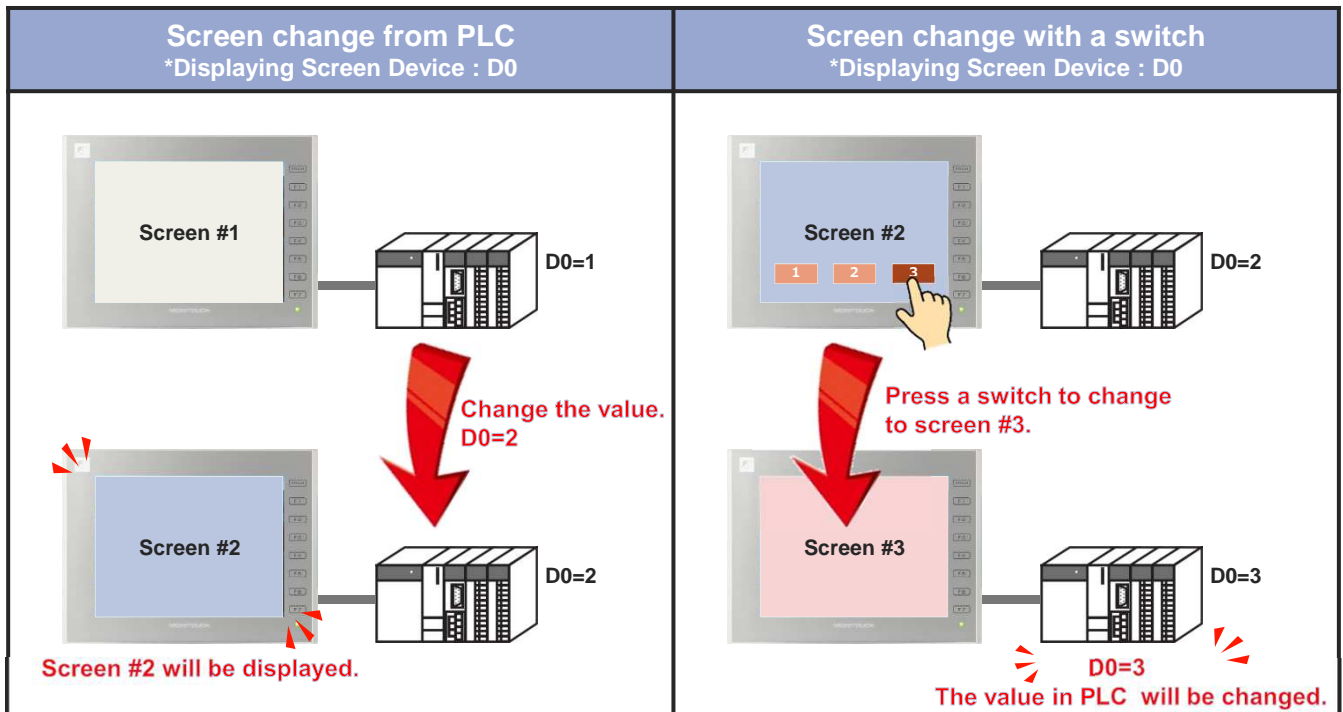
- **Displaying Screen Device** : 1 word to control displaying screen number .
- **Control Device / Info. Output Device** : Memory allocation for various functions.
- **Initial Screen Selection** : Initial screen designation after Power ON or RUN mode.

Displaying Screen Device

Screen number monitor and control can be set up by “Displaying Screen Device”.



Integration of Read area n+2 (Screen number control) and Write area n+2 (Displaying screen number) into “Displaying Screen Device”.

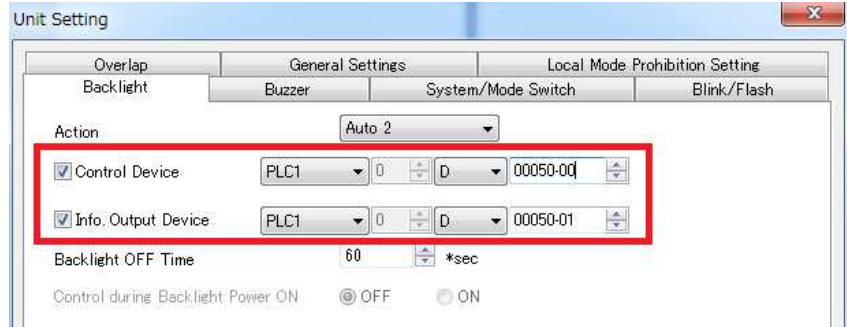
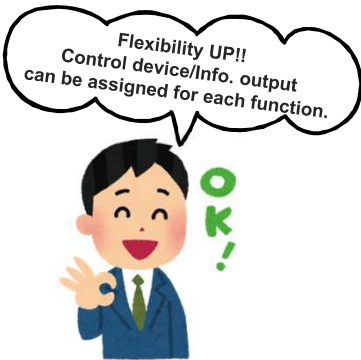


Both “Displaying screen number” & “Screen Change from PLC” can be set up and monitored on “Displaying Screen Device”.



Control Device/Info. Output Device

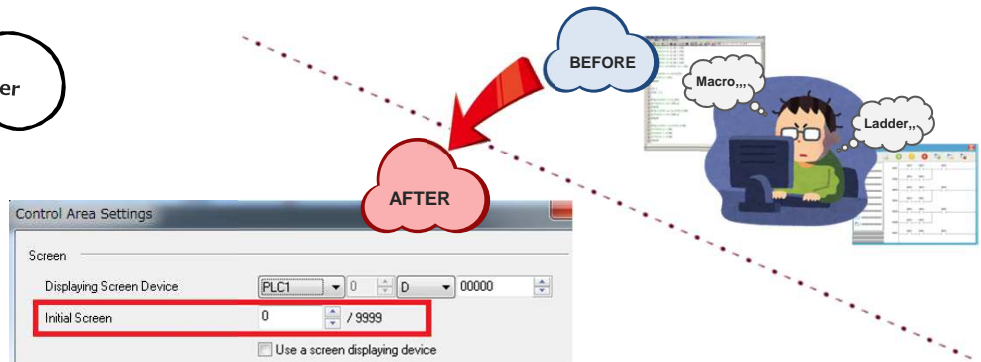
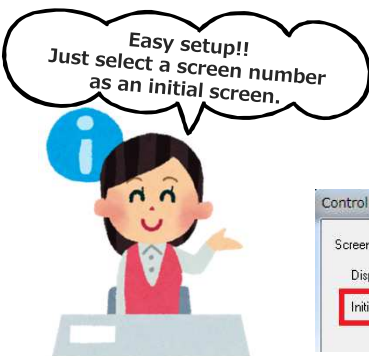
Control Device & Info. Output Device can be assigned for each function or part.
Any device memory can be assigned for each function, programming flexibility is up.
 *No need to change the setting on upgrade from V8 series



[E.g.: Backlight control and its Info. Output Device]

Initial Screen Selection

Initial Screen Number selection on Power ON or Run mode



Initial screen selection does not need to be programmed by PLC Ladder program or macro.
Great efficiency for programming & Easy setup for renewing your screen.



If "Initial Screen" is set up, "Screen No Error" never happens on Run mode.